

St. Lucie River Estuary Water Quality Report

This information is provided by the Florida Oceanographic Society with support of the Marine Resources Council. It is collected by the Citizen Volunteer Water Quality Monitoring Network. For historical data go to our website at: <http://www.floridaocean.org>

For sample results related to bacteria levels go to:

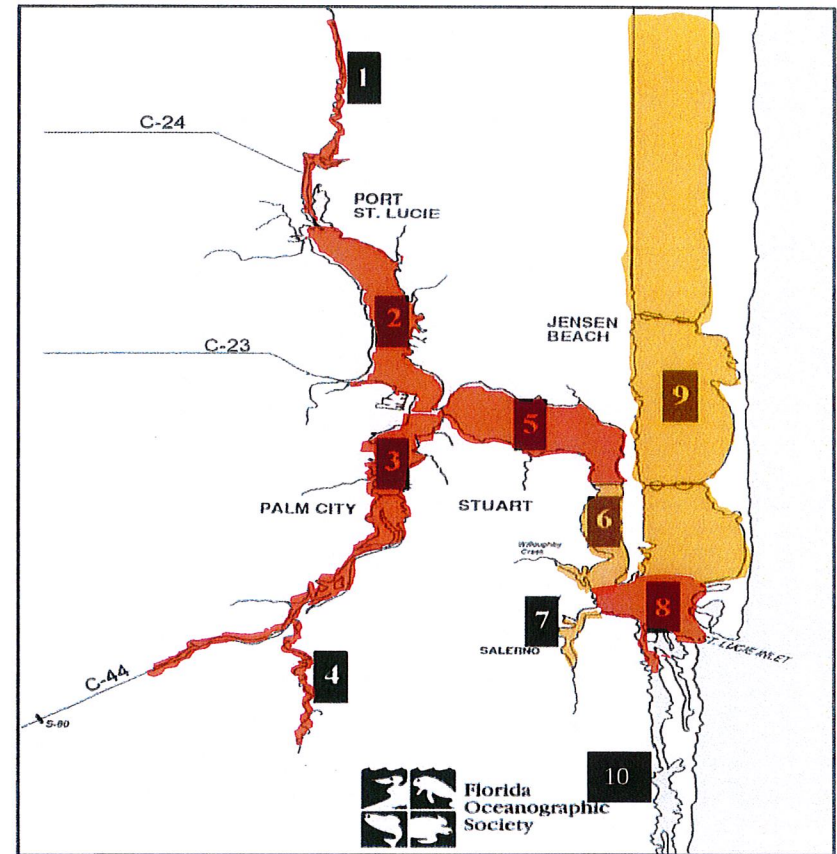
<http://martin.floridahealth.gov/programs-and-services/> and click on the Environmental Health link

Posted:

09/21/17

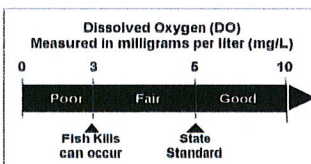
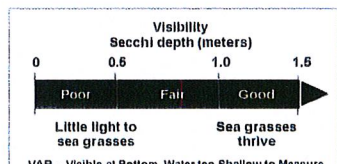
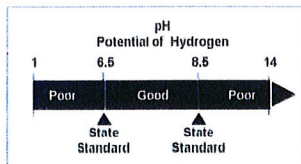
Overall Grade:	55%	F	DESTRUCTIVE
----------------	------------	----------	--------------------

Zone/ Location	Water Temp. Deg. F	pH	Visibility (Secchi) Meters	Salinity ppt	Dissolved Oxygen mg/L	Location Score Grade
1. Winding North Fork	89	7.0	0.5 Fair	0 Poor	1.9 Poor	56% F Destructive
2. North Fork	82	6.9	0.4 Poor	0 Poor	1.5 Poor	46% F Destructive
3. South Fork	84	7.6	0.1 Poor	0 Poor	3.0 Fair	51% F Destructive
4. Winding South Fork	84	7.2	0.5 Fair	0 Poor	0.4 Poor	56% F Destructive
5. Wide Middle River	82	7.3	0.4 Poor	1 Poor	3.8 Fair	51% F Destructive
6. Narrow Middle River	85	7.8	0.6 Fair	1 Poor	3.1 Fair	61% D Poor
7. Manatee Pocket	82	8.0	0.6 Fair	8 Poor	4.8 Fair	61% D Poor
8. Inlet Area	86	7.6	0.4 Poor	5 Poor	3.3 Fair	51% F Destructive
9. Indian River Lagoon	84	8.1	0.9 Fair	24 Poor	5.1 Good	66% D Poor
10. Intracoastal Waterway South			Data	Not	Available	



A	B	C	D	F
100-90	89-80	79-70	69-60	69-0
IDEAL	GOOD	SATISFACTORY	POOR	DESTRUCTIVE

Zones	description	GOOD	FAIR	POOR
1&4	upper north & south forks	2 - 8	1 - 2 or 8 - 15	< 1 or > 15
2 & 3	lower north & south forks	15 - 25	10 - 15 or > 25	< 10
5	wide middle river	> 20	15 - 20	< 15
6	narrow middle river	> 25	20 - 25	< 20
7	Manatee Pocket	> 27.5	20 - 27.5	< 20
8	inlet	> 30	25 - 30	< 25
9	IRL & Intracoastal W'wy	> 30	25 - 30	< 25



Comment: The data above may indicate areas of concern in the St. Lucie Estuary. Citizens should call the Florida Department of Environmental Protection (DEP) at 871-7662 or the South Florida Water Management District (SFWMD) 223-2600 to ask about the quality of a specific area and report observations of pollution.

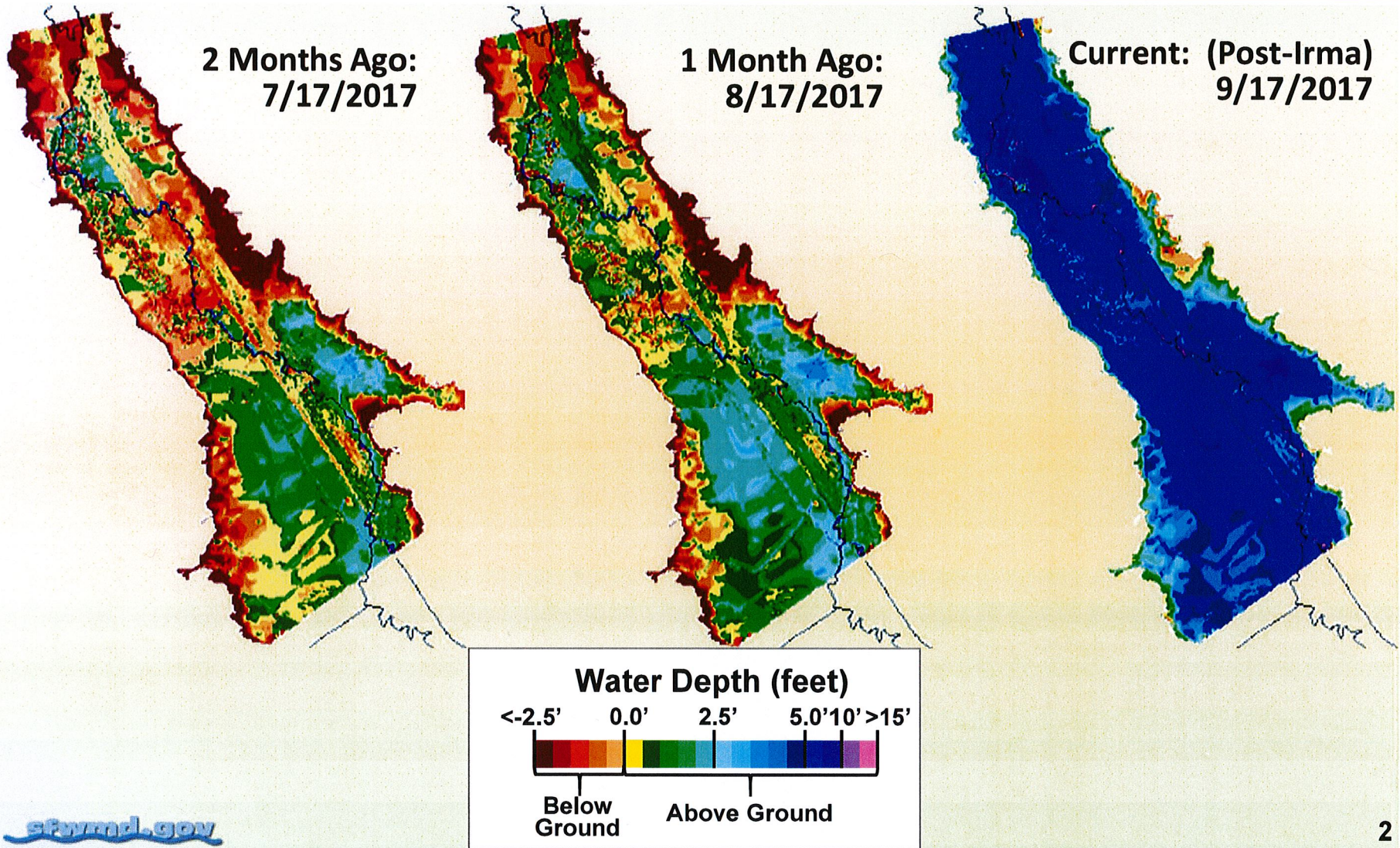
Governing Board Meeting
September 21, 2017

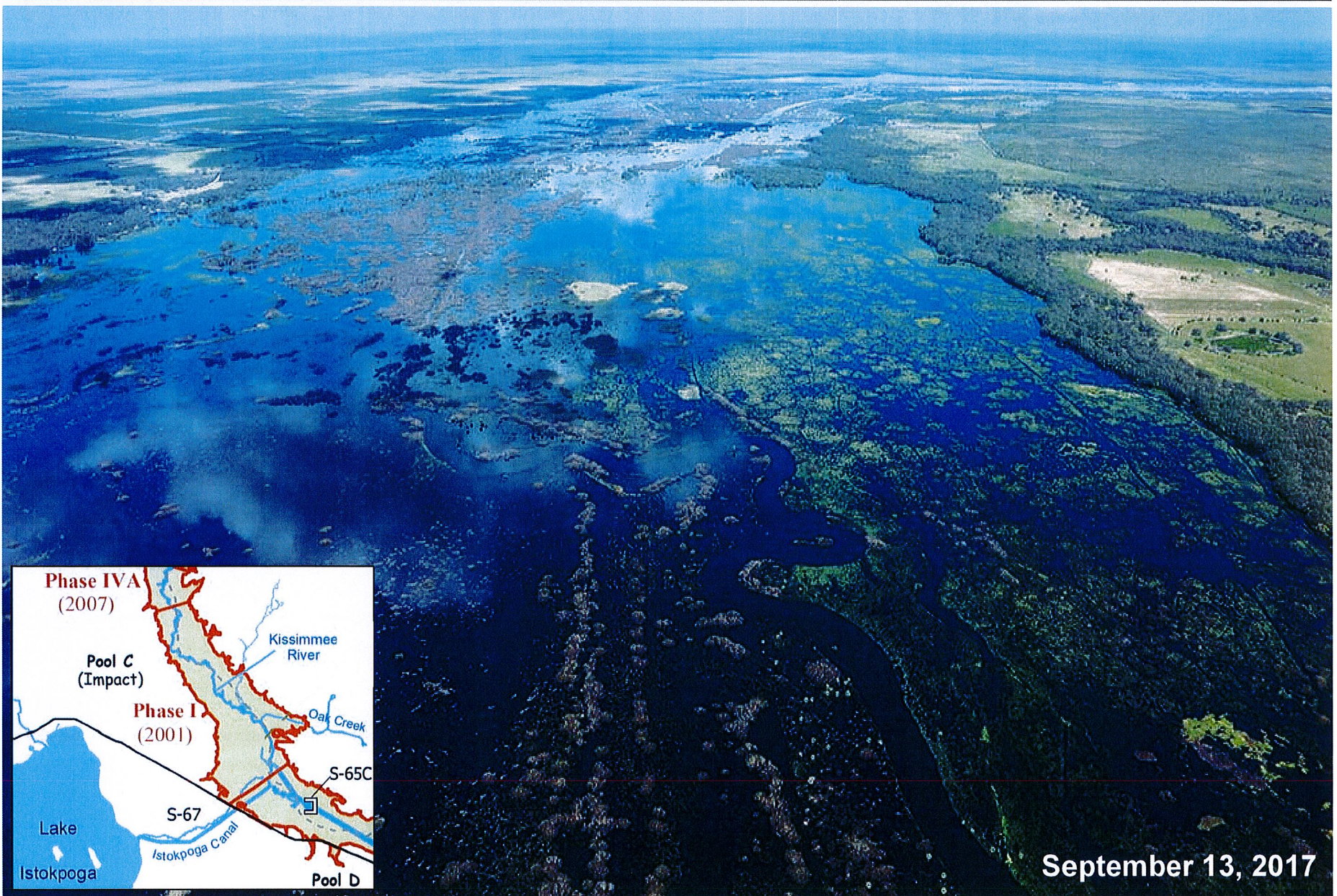


Ecological Conditions Update

Susan Gray
Bureau Chief, Applied Sciences

Kissimmee River Phase I Restoration Area Water Depth Maps





Lake Okeechobee Water Depth Maps

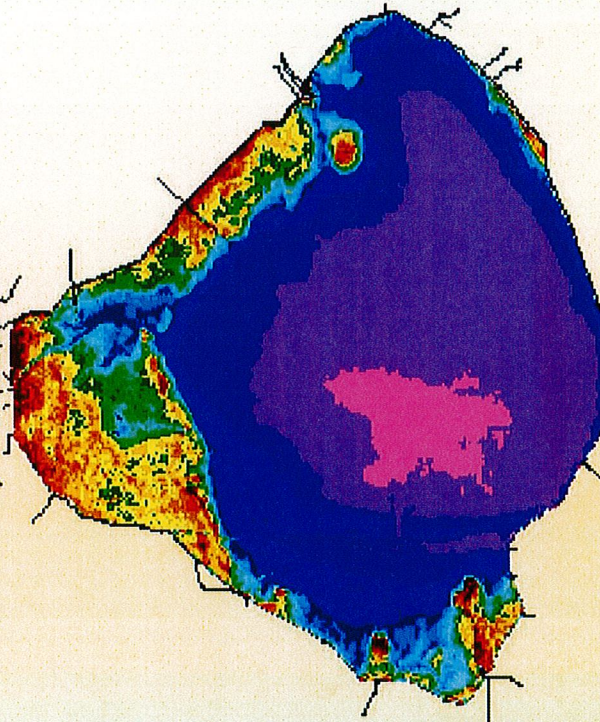
1 Year Ago: 9/18/2016

Before Irma: 9/5/2017

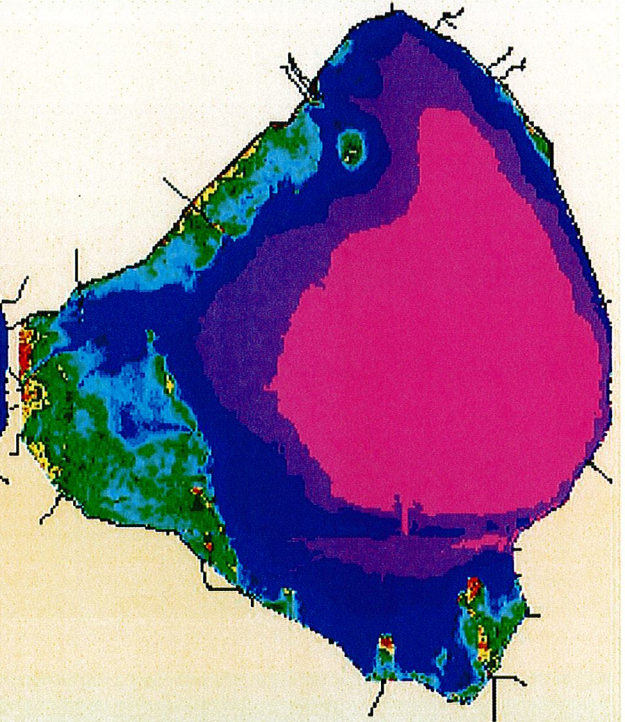
Current: 9/18/2017



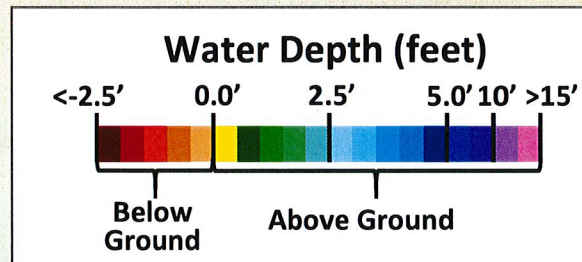
(15.44 ft NGVD29)



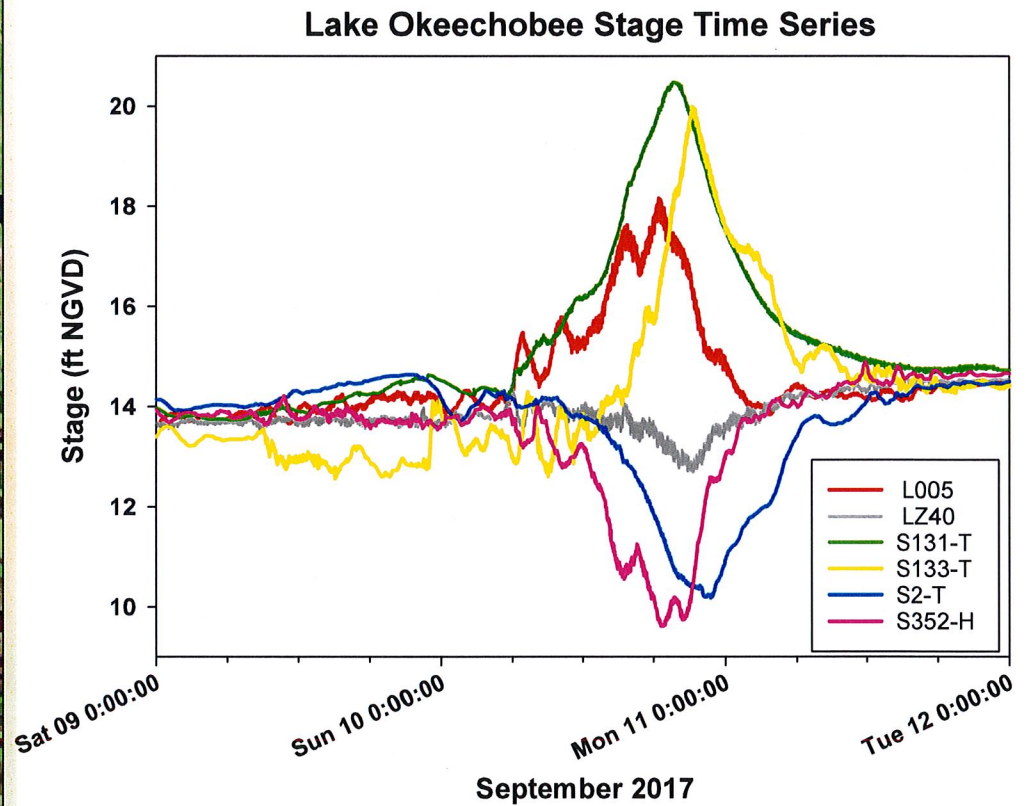
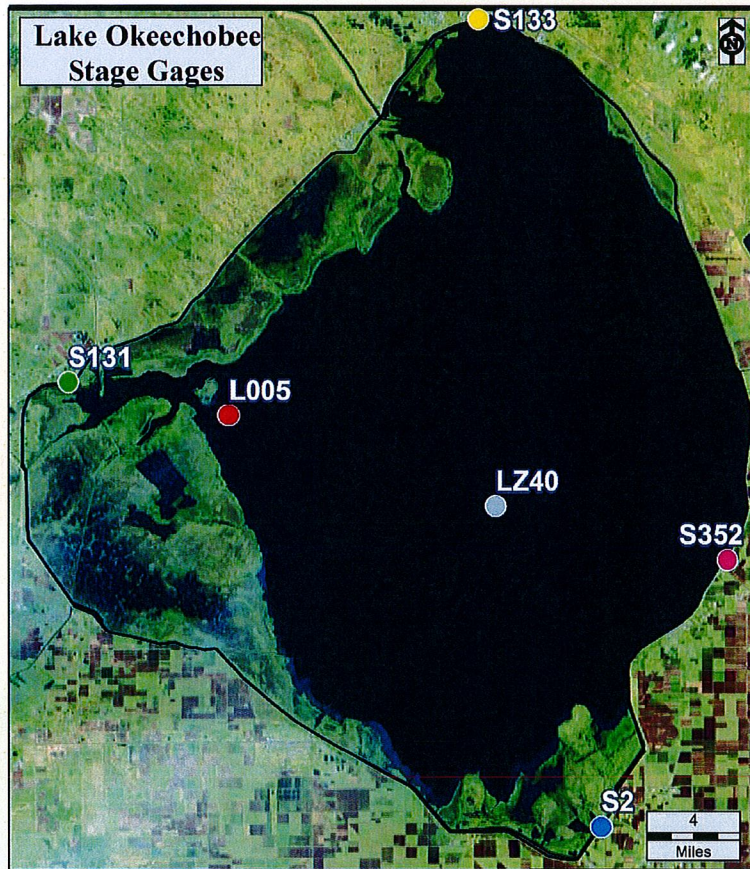
(13.66 ft NGVD29)

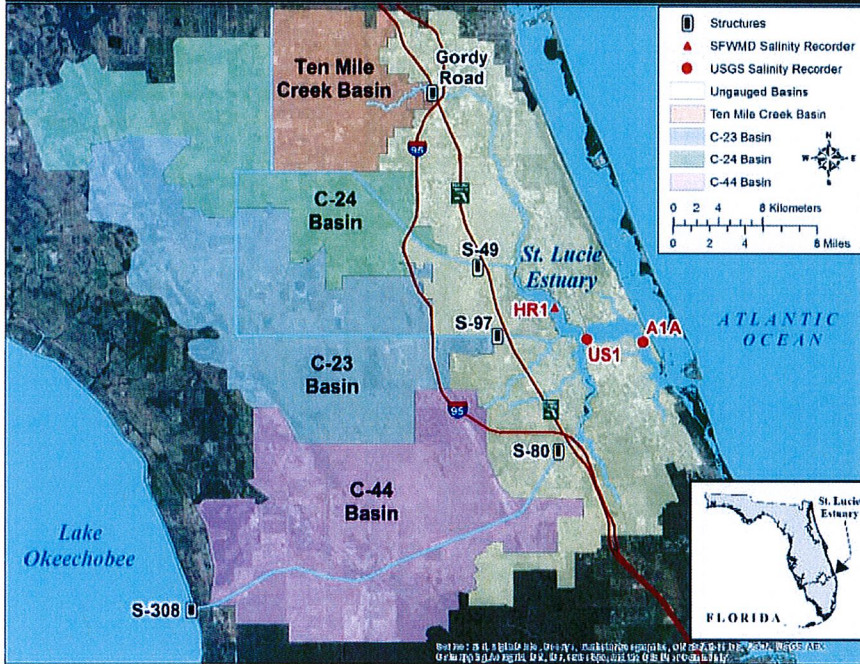


(15.66 ft NGVD29)



Hurricane Irma Seiche



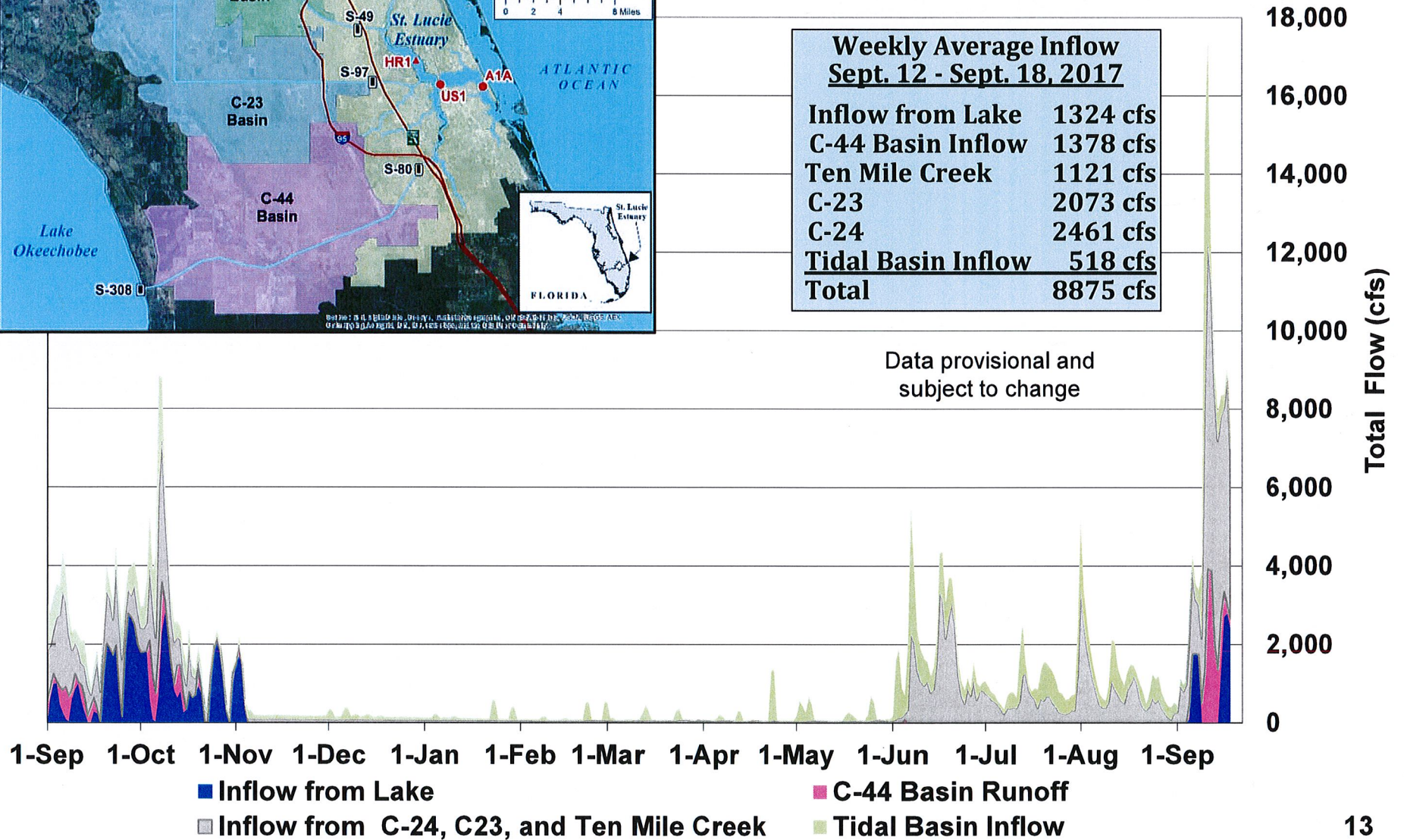


St. Lucie Estuary

Weekly Average Inflow Sept. 12 - Sept. 18, 2017

Inflow from Lake	1324 cfs
C-44 Basin Inflow	1378 cfs
Ten Mile Creek	1121 cfs
C-23	2073 cfs
C-24	2461 cfs
Tidal Basin Inflow	518 cfs
Total	8875 cfs

Data provisional and subject to change

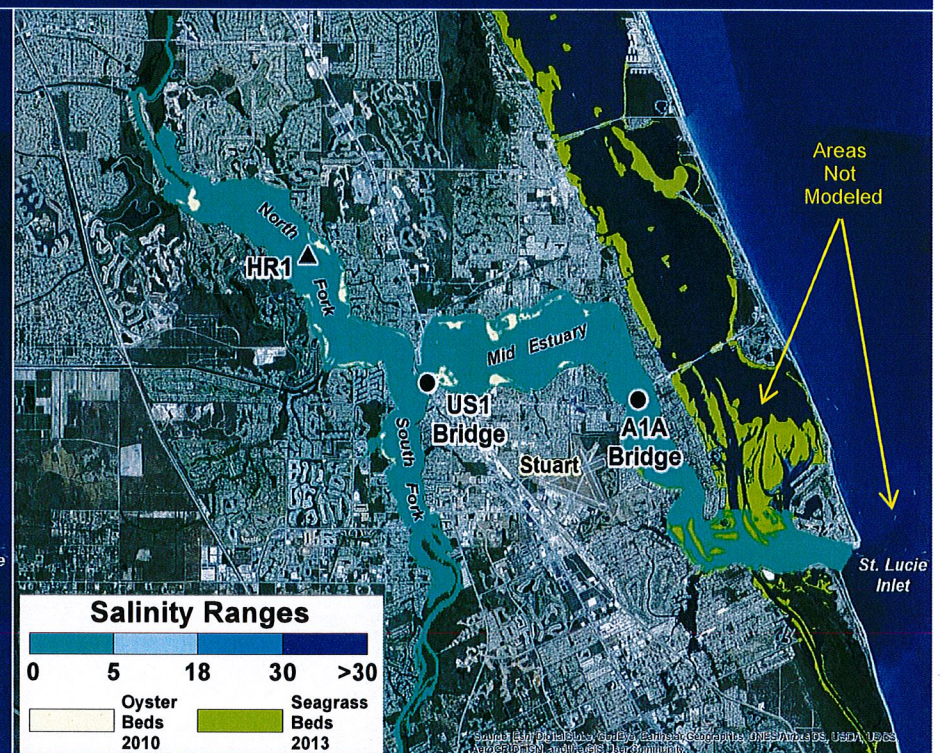
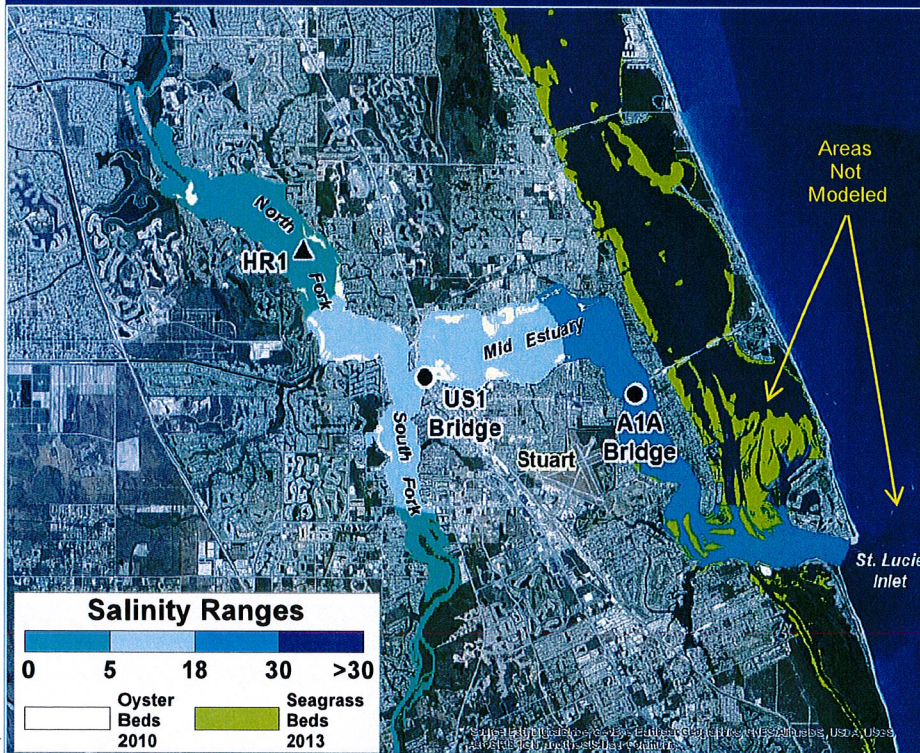


St. Lucie Estuary

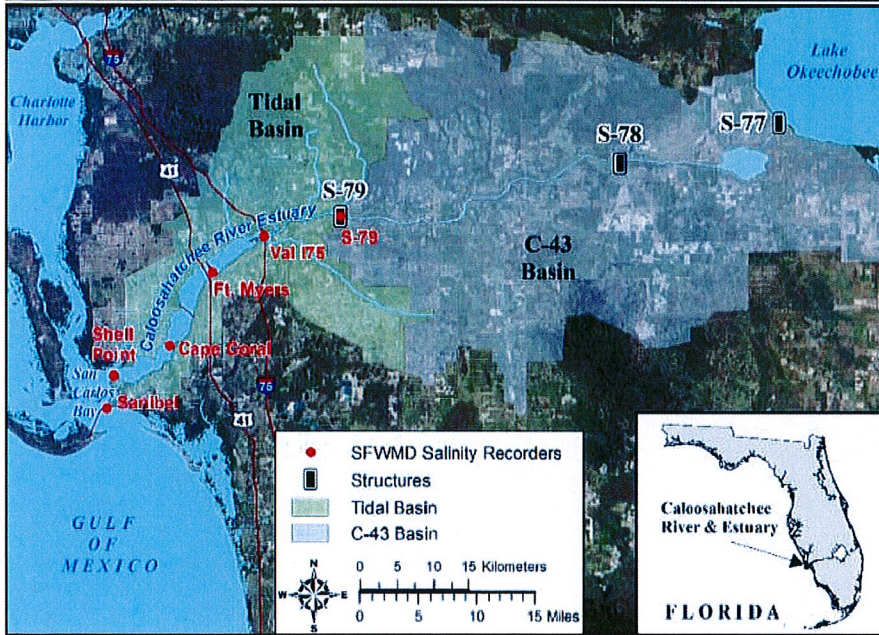
Salinity Conditions

July 31, 2017

Sept. 18, 2017



Caloosahatchee Estuary



**Weekly Average Inflow
Sept. 12 - Sept. 18, 2017**

Inflow from Lake:	0 cfs
C-43 Basin Inflow:	13643 cfs
Tidal Basin Inflow:	1579 cfs
Total :	15222 cfs

Data are provisional and subject to change

