

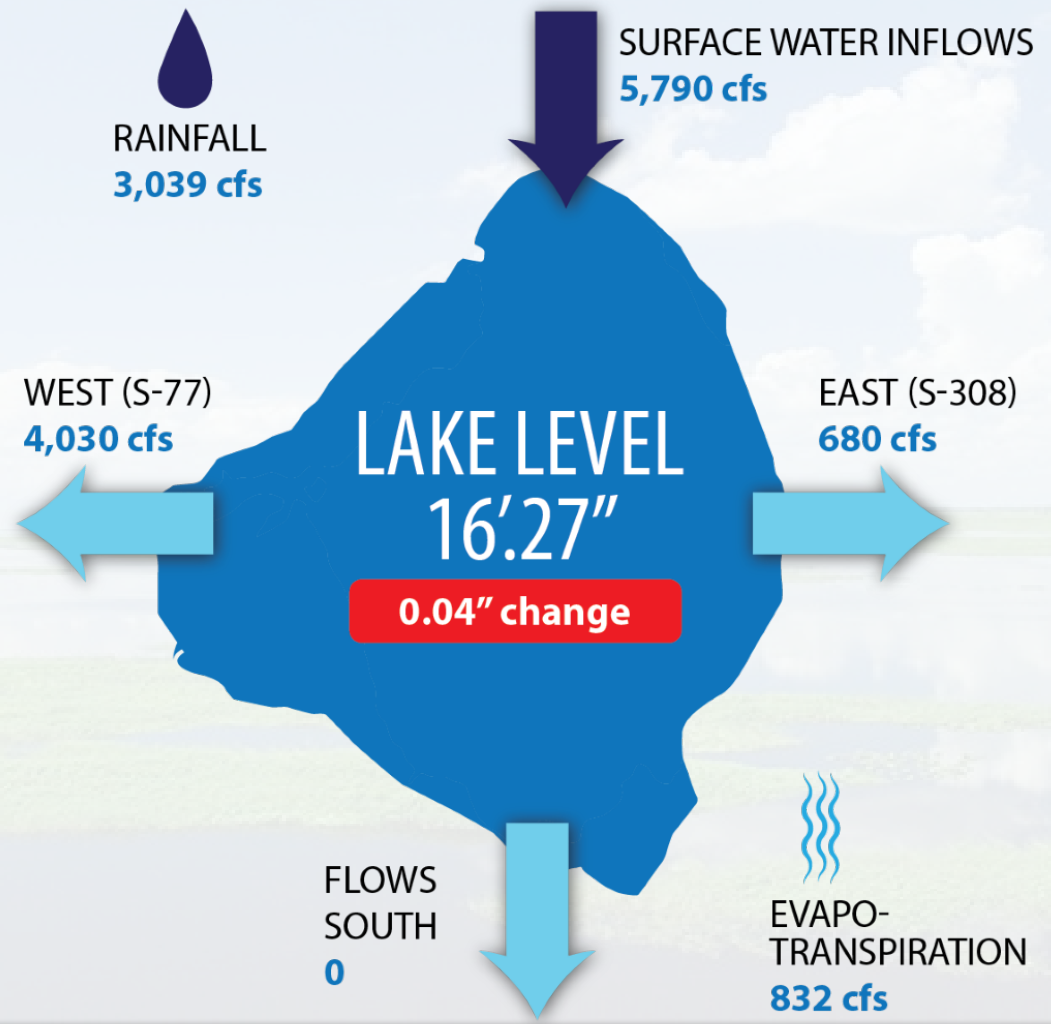
South Florida Water Management District



Jennifer Reynolds
Division Director, Ecosystem Restoration and Capital Projects



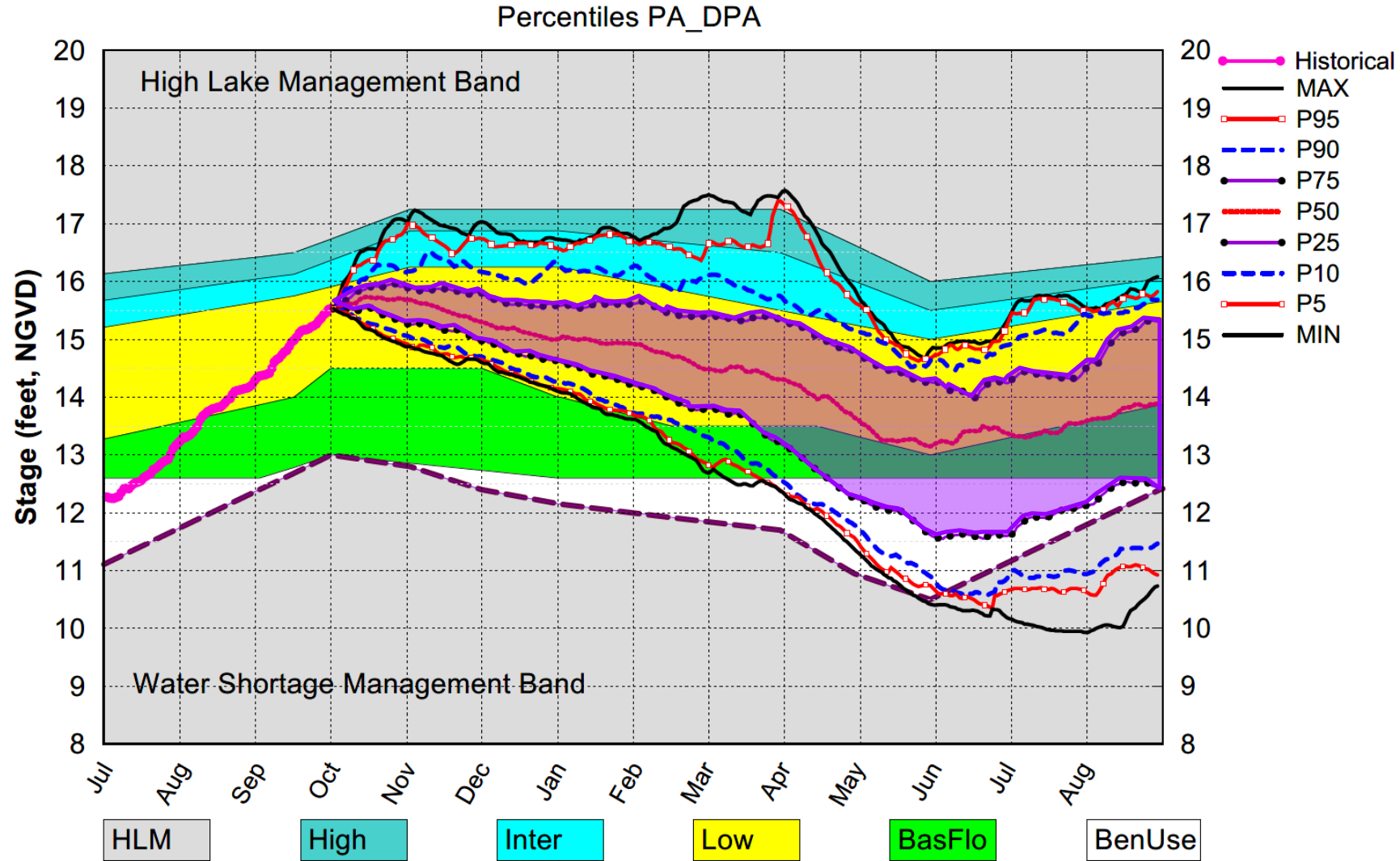
Update on Lake Okeechobee Discharges



Pulse Releases to St. Lucie Estuary

10/15/20	550 cfs
10/16/20	600 cfs
10/17/20	900 cfs
10/18/20	1,400 cfs
10/19/20	3,150 cfs
10/20/20	3,500 cfs
10/21/20	2,500 cfs
Weekly Average	1,800 cfs

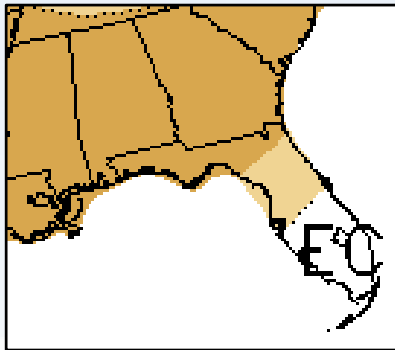
Lake Okeechobee SFWMM Oct 2020 Position Analysis



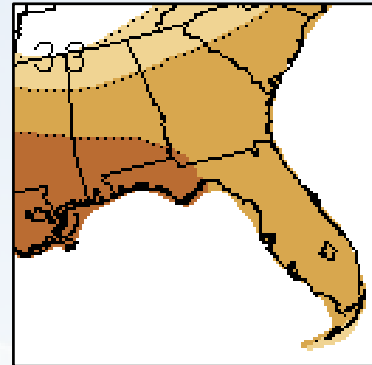
(See assumptions on the Position Analysis Results website)

Sun Oct 4 23:18:17 2020

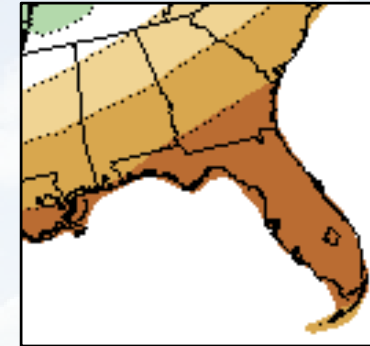
CPC Precipitation Outlook for South Florida



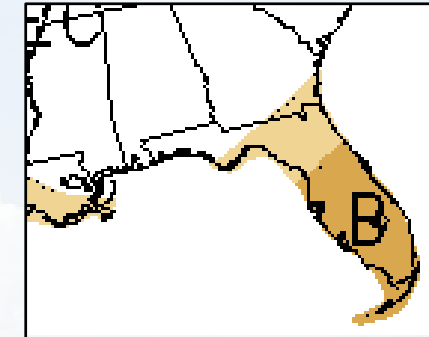
Nov 2020



Nov-Jan



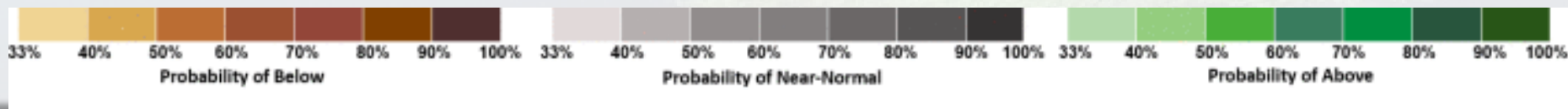
Dec-Feb



Mar-May

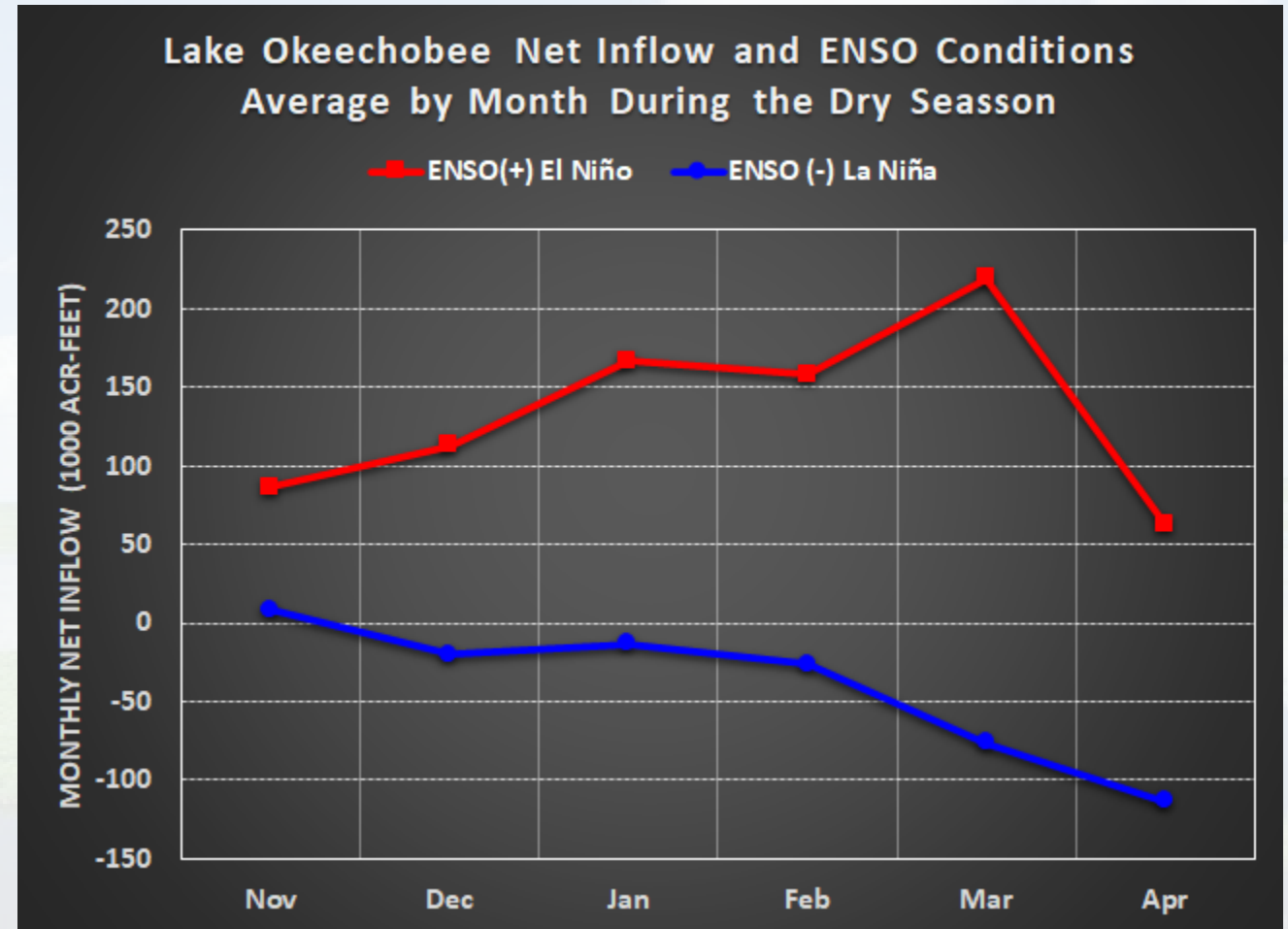
https://www.cpc.ncep.noaa.gov/products/predictions//multi_season/13_seasonal_outlooks/color/churchill.php

- The most recent CPC precipitation outlook for Nov 2020 calls for equal chances of above-normal, normal, and below-normal rainfall.
- The outlooks for the 3-month window Nov-Jan is for increased chances of below-normal rainfall.
- The other the 3-month windows from Dec-Feb to Feb-Apr for substantially increased chances of below-normal rainfall.
- From the Mar-May window to the window May-Jul (transition to the 2021 wet season) the outlooks are for increased chances of below-normal rainfall , followed by equal chances of above-normal , normal, and below-normal rainfall, and ending with a slightly increased chances of above normal.



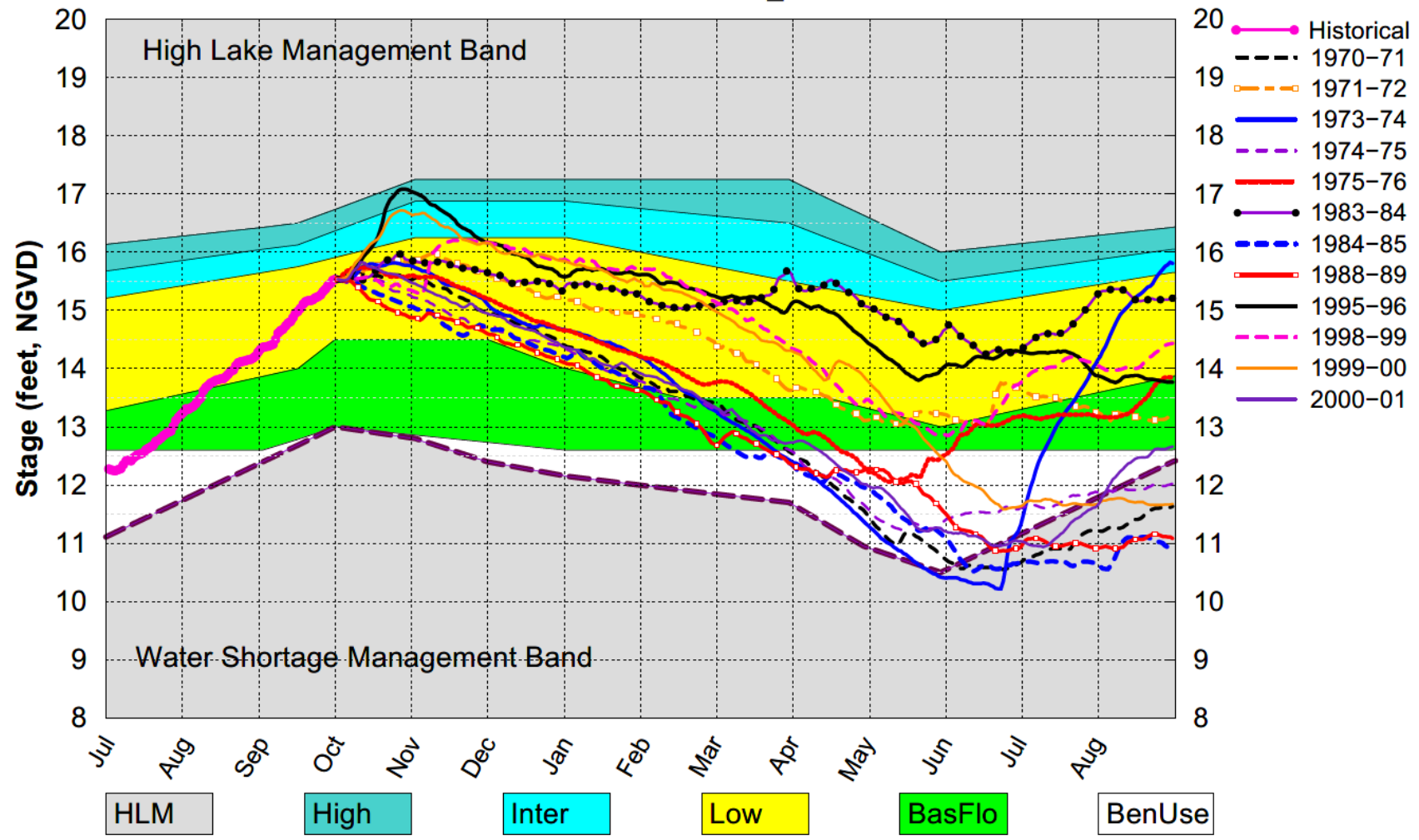
What is La Niña and Why Do We Care?

- El Niño increases the chances of a wetter-than-normal dry season and decreased tropical activity, La Niña increases the chances of a drier-than-normal dry season and tropical activity (both have most influence November through March).
- In general, November through March rainfall is expected to be ~ 140% of normal during El Niño, ~ 85% of normal for ENSO Neutral and ~60-65% of normal for La Niña
- ENSO conditions are a big determinant in Lake Okeechobee Net Inflow during the dry season



Lake Okeechobee SFWMM Oct 2020 Position Analysis

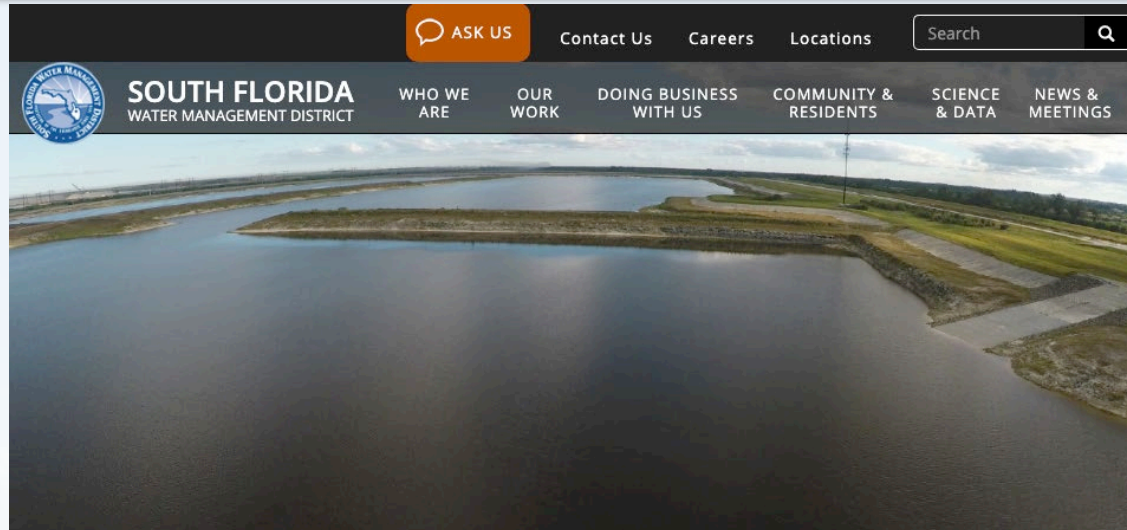
All La Nina Years Plot PA_DPA



(See assumptions on the Position Analysis Results website)

Mon Oct 5 15:19:49 2020

Get the Latest Updates



Home >> DISTRICT ACTIONS REDUCE HARMFUL DISCHARGES NORTHERN ESTUARIES

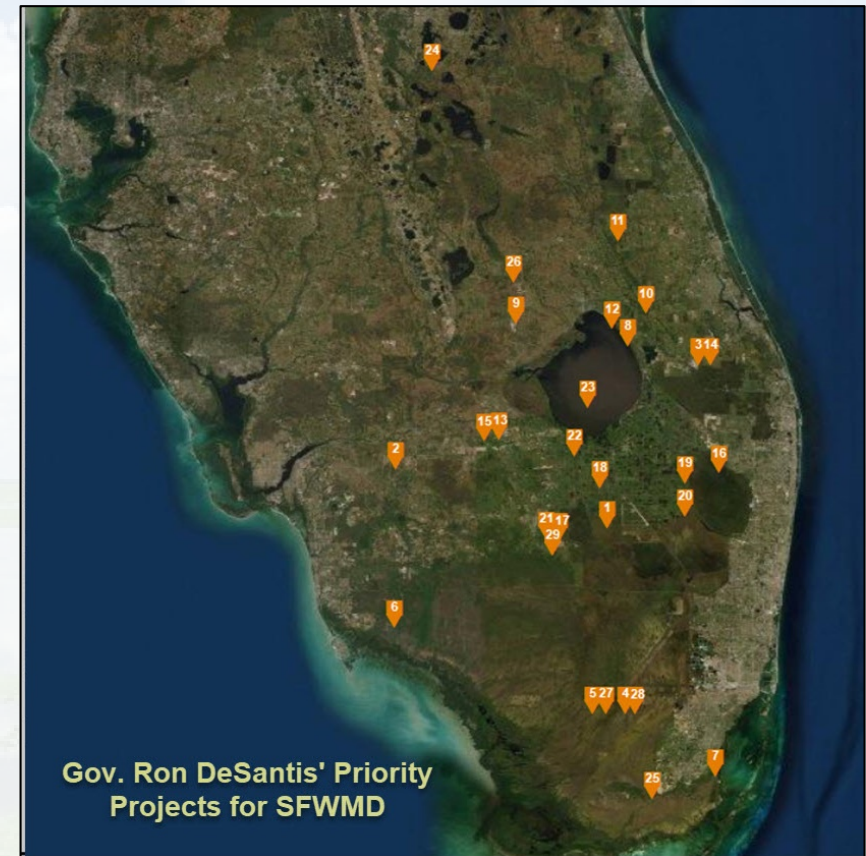
District Actions to Reduce Harmful Discharges to Northern Estuaries

Lake Okeechobee water is being discharged to the St. Lucie and Caloosahatchee Estuaries by the U.S. Army Corps of Engineers. SFWMD is actively working to reduce Lake Okeechobee levels and shorten the duration of these harmful discharges.

Long term, restoring the Everglades is key to preventing harmful discharges, and expediting the EAA Reservoir Project and other Everglades restoration projects remain top

SFWMD.gov

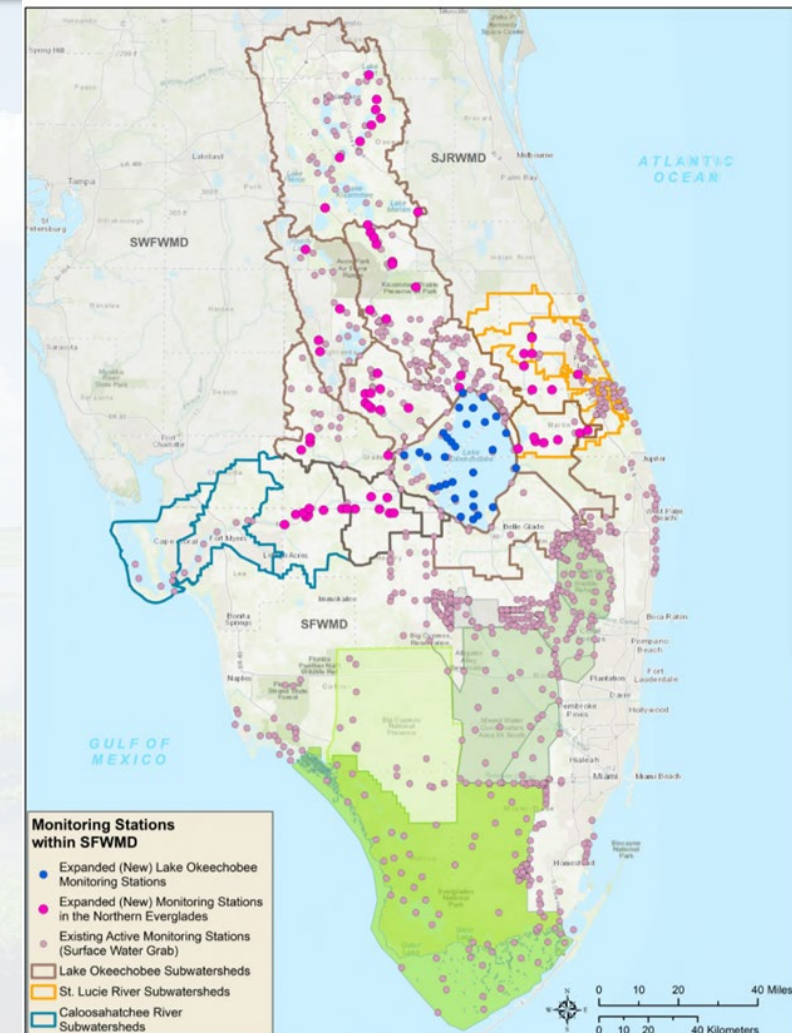
Governor DeSantis' Executive Order and 29 Priority Restoration Projects



- Expedite projects to restore the Everglades and improve water quality

Water Quality and Our Role

- In August, SFWMD voted to dramatically expand our water quality monitoring network
- **243 monitoring sites** and monitors water quality across nearly 5.5 million acres to support water quality efforts
- Collaborate closely with the Florida Dept. of Environmental Protection
- Coordinate with the Florida Dept. of Agriculture and Consumer Services and DEP to develop best management practices to address agricultural water quality



What to Expect in 2020 and How You Can Help

- Projects taking major steps forward to restore the historic flow of water through the Everglades, improving water quality and ecosystems
- Prioritize climate change and sea level rise into planning efforts
- Keep the momentum up through engagement at local, state and federal level



Thank You

