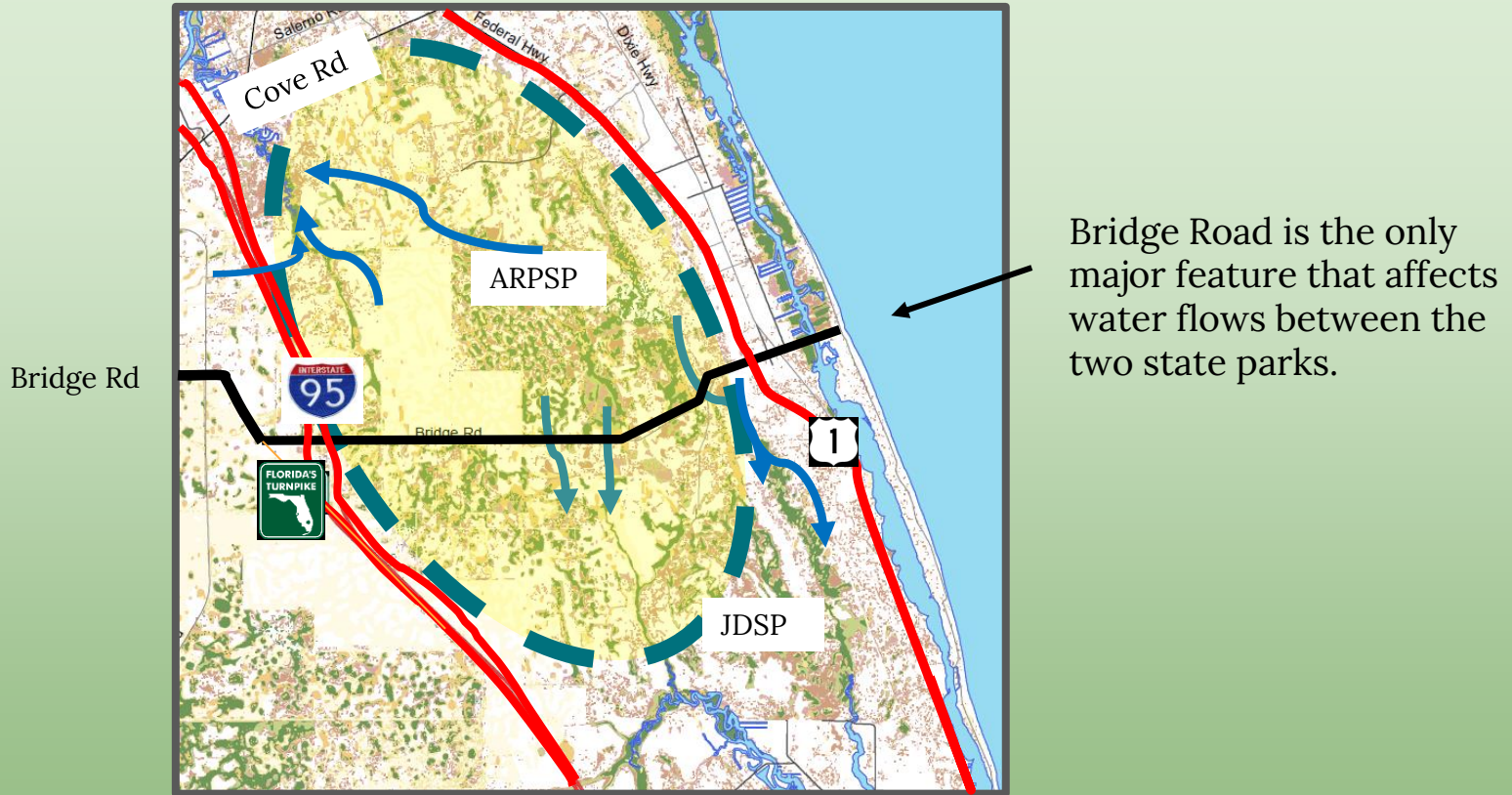


# The Loxa-Lucie Headwaters Initiative



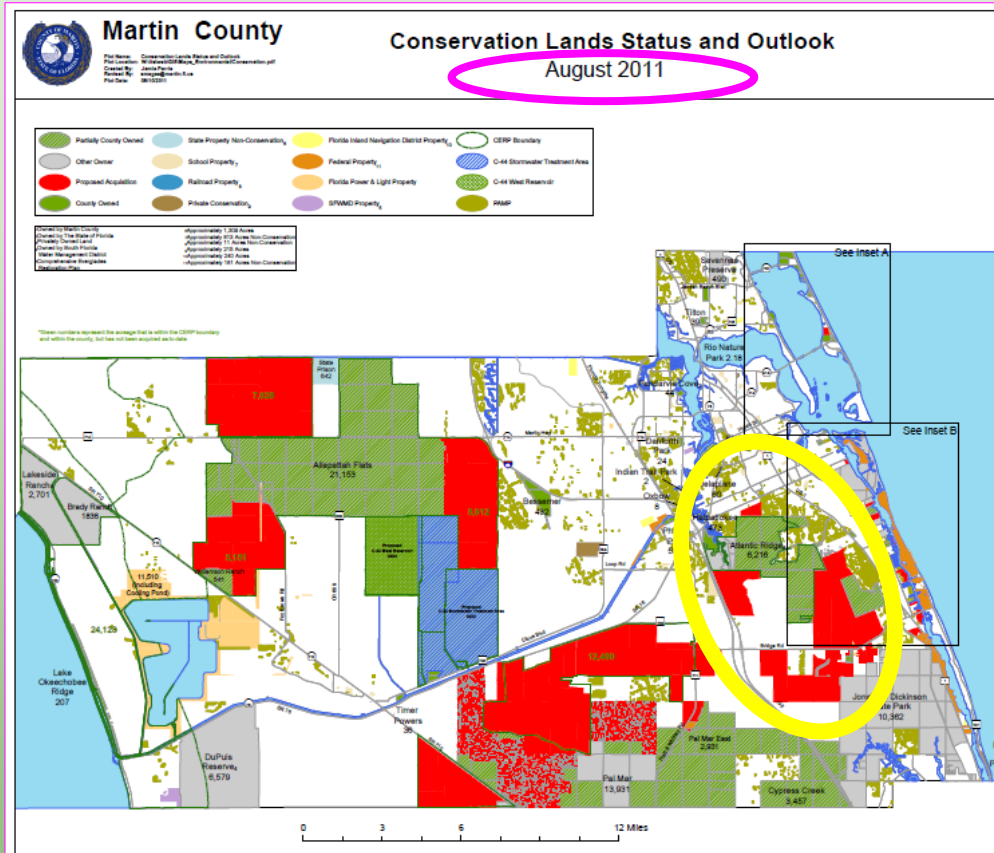
The Loxa-Lucie Headwaters Initiative envisions a protected ecological corridor that will connect the sources of the Loxahatchee & St Lucie Rivers and form a preserve for native plants and wildlife connecting a land mass of nearly 70,000 acres.

## Loxa-Lucie Headwaters – Regional Context



The project is generally bounded on the west by the Florida Turnpike & I-95, and on the east by developed areas west of U.S. 1, between Atlantic Ridge Preserve State Park (ARPSP) and Jonathan Dickinson State Park (JDSP).

# Loxa-Lucie - County-wide Context

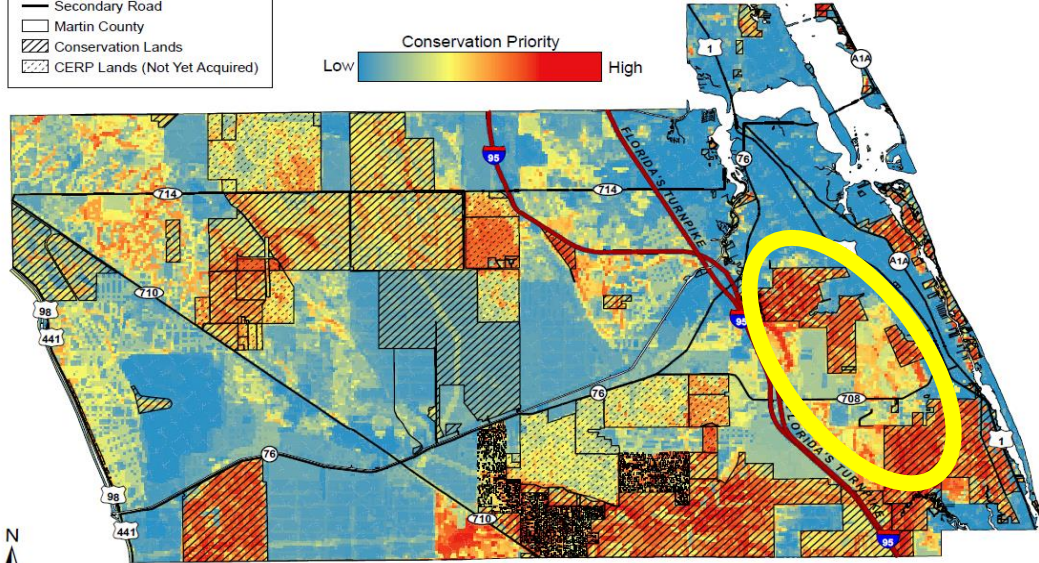
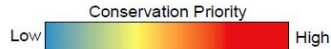
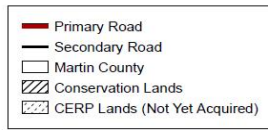


Green & gray = Publicly-owned conservation lands  
Red = Desirable to be acquired  
Blue = C-44 Reservoir & Stormwater Treatment Area

These properties were identified for conservation more than 10 years ago as part of a county-wide interconnected network of conservation lands.

# Loxa-Lucie – Ecological Context

## Treasured Lands Foundation Merged Priorities Map Martin County



0 2.5 5 10 Miles

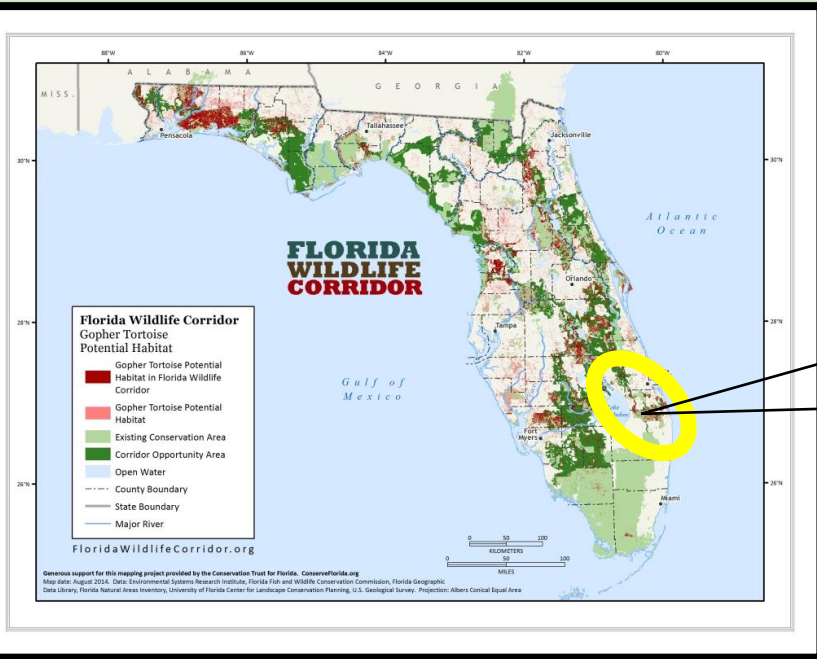


## Parameters Considered

- Rare Species Habitat
- Verified Impaired Waters
- Priority Natural Communities
- Aquifer Recharge
- CERP – Everglades Restoration
- Loxahatchee River Watershed
- Wetlands
- Freshwater Habitat Threats
- Blueways and Greenways
- Potential Habitat Richness
- Strategic Habitat Conservation Areas
- Fla Ecological Greenways Network
- Fla Forever Approved Projects
- Park Buffering
- Landscape Integrity Index
- Nationally-Registered Historic Sites
- Optimal Park Boundaries
- Scenic Byways
- Flood Risk
- Prime & Statewide Unique Soils
- Forest Soils

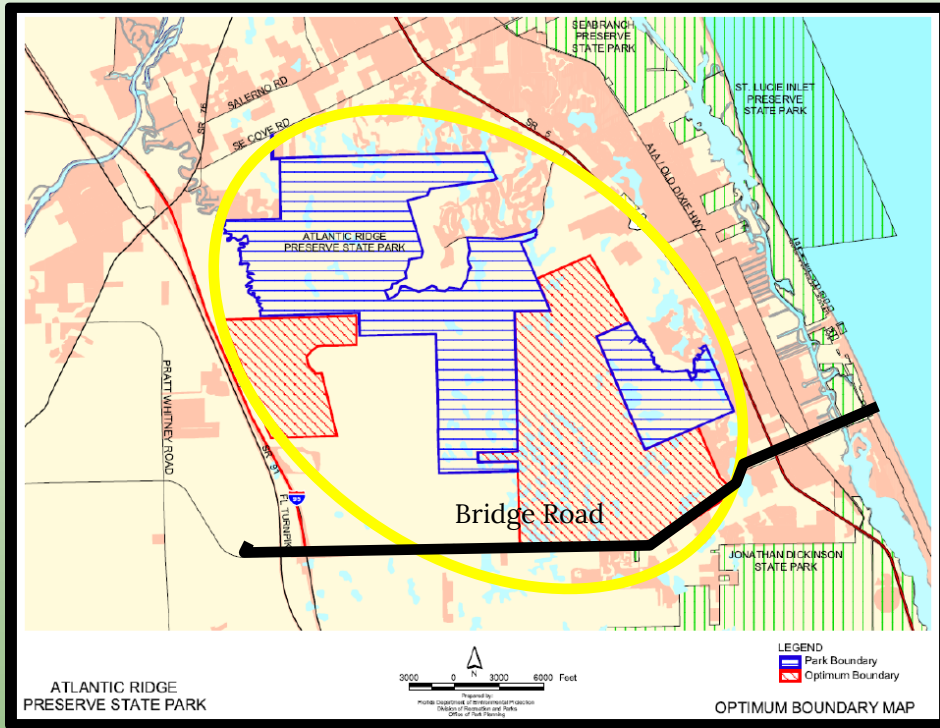
This “Environmental Priorities” Figure shows the most environmentally valuable properties in Martin County in the brightest colors, which include the Loxa-Lucie headwaters complex.

# Loxa-Lucie – Part of a designated state-wide Wildlife Corridor



This area has been identified as the easternmost portion of the Florida Wildlife Corridor east of Lake O.

# Loxa-Lucie - Optimal Park Boundaries north of Bridge Road

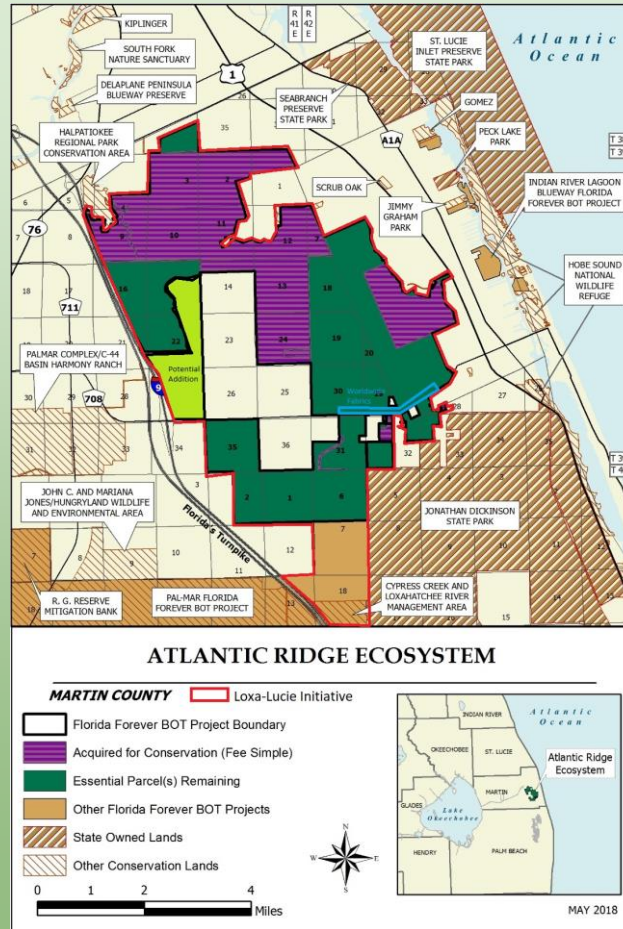


These Figures taken from the Management Plans for the Atlantic Ridge Preserve State Park and JDSP identify parcels that the State has designated as being desirable additions to the parks.

# Loxa-Lucie Headwaters

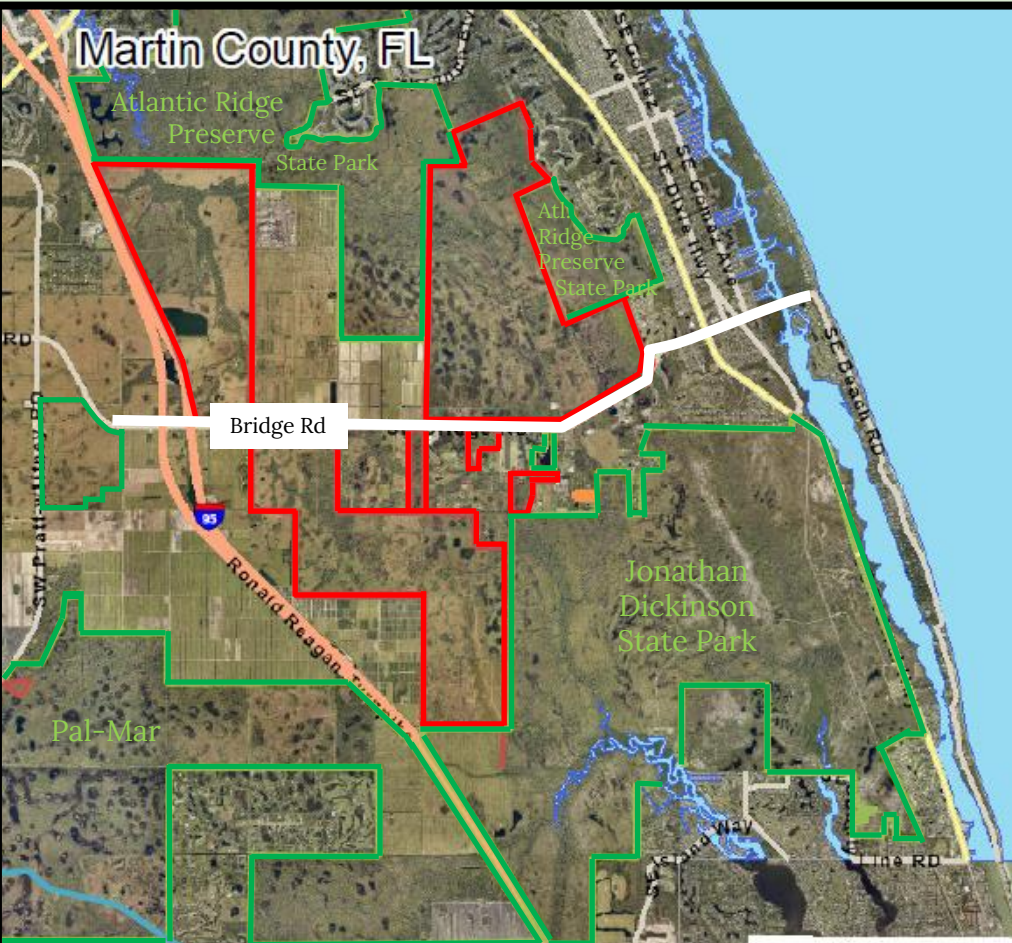
Florida Forever  
Florida's State-wide Land  
Conservation Program

Existing Florida Forever  
Atlantic Ridge Ecosystem  
project map.



Dark green parcels are  
proposed to be acquired if  
owners are willing sellers.

# Loxa-Lucie Headwaters



- Several large tracts are already in public ownership (outlined in green)
  - J. Dickinson State Park
  - Atlantic Ridge Preserve State Park
  - Halpatiokee Regional Park
  - Pal-Mar
- Several privately-owned tracts (outlined in red) are in substantially natural condition
- Most tracts are outside Martin County's Urban Services Boundary
- Development pressure is present due to zoning for development

# Here's why it is so important to preserve the Loxa-Lucie Headwaters now

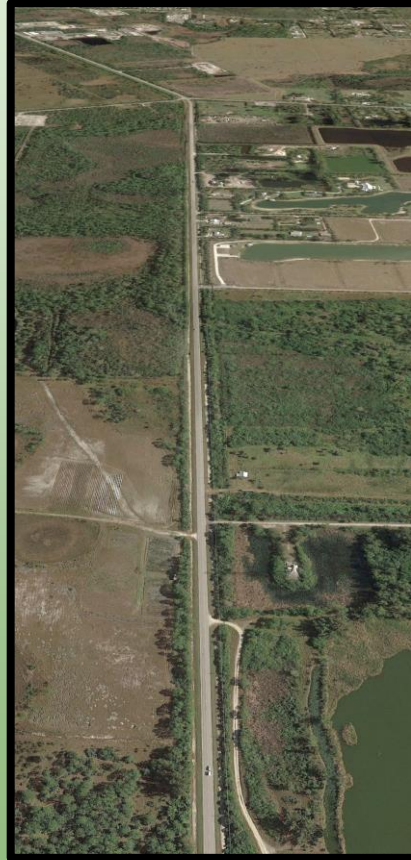
**This? or This?**

Bridge Rd  
Gateway to Hobe Sound

East of I-95  
View looking east

Date of Photo: 1/14/19  
Source: Google Earth

(Most of the Bridge Road corridor is in natural or restorable condition)

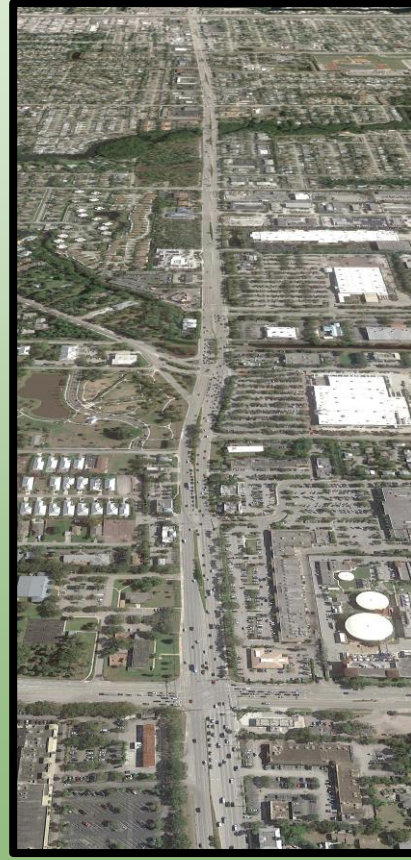


Indiantown Rd  
Gateway to Jupiter

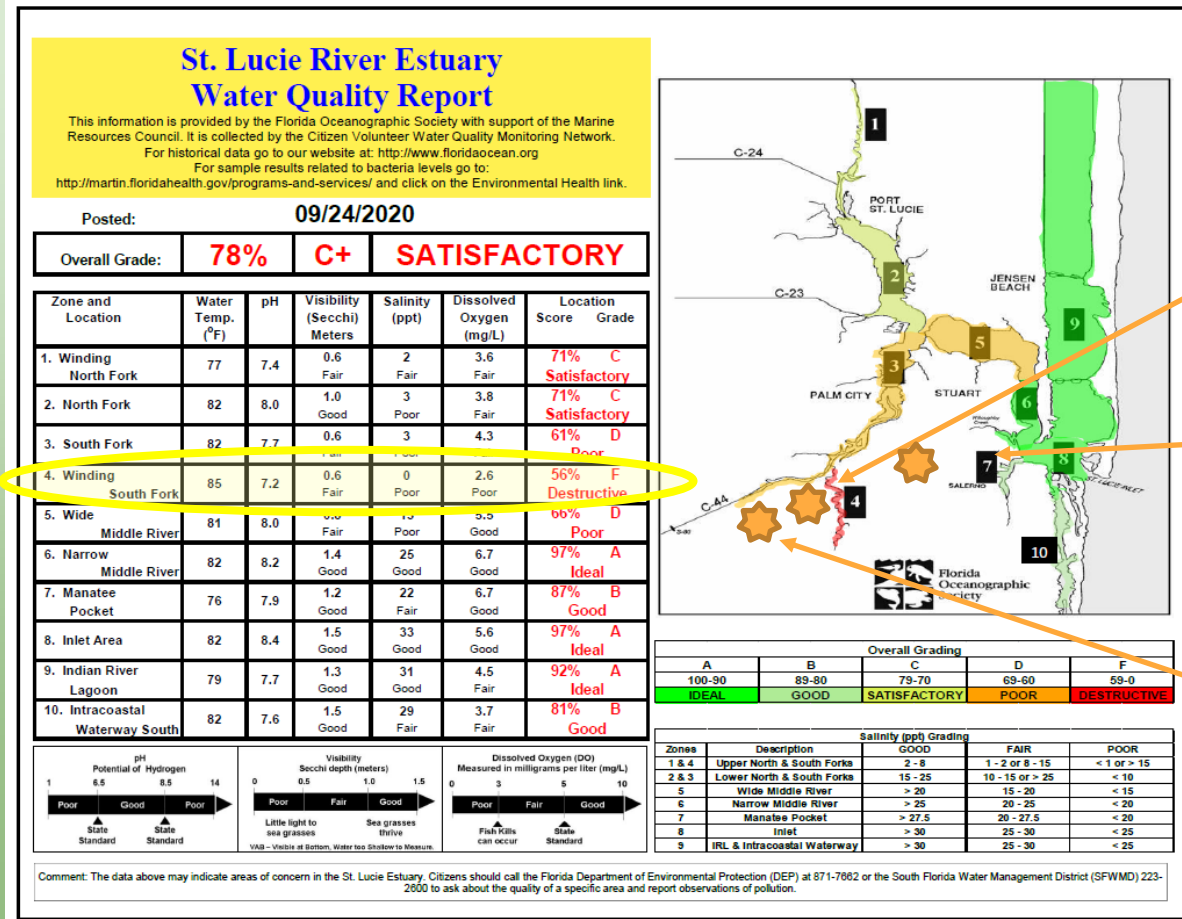
East of I-95  
View looking east from  
intersection with  
Central Blvd

Date of Photo: 1/13/19  
Source: Google Earth

(It is too late to protect  
natural communities  
and watersheds)



# Here's why it is so important to preserve the Headwaters of the South Fork now



9/29/2020 BOCC approved CPAs allowing several hundred new homes on ~300 acres of existing vacant land

10/2020 County reviewing a new proposal for 114-lot residential community on ~100 acres of existing vacant land south of Cove Rd.

10/27/2020 BOCC approved CPAs allowing >1M ft<sup>2</sup> distribution ctr on ~500 acres

# Here's why it is so important to preserve the Headwaters of the Loahatchee now

## LOXAHATCHEE RIVER MANAGEMENT COORDINATING COUNCIL

		River Health				Supplemental Flows	Enjoyment - Education - Outreach				Invasives Treated	Controlled Burn
		Rainfall	Minimum Flow Compliance	Salinity @ NB seagrass beds	Bacterial Counts	G-161 & G-160	River Center	JDSP	Riverbend Total Visitors	Riverbend Canoe/Kayak	JDSP	JDSP
Benchmark / Customer Expectation	inches of rainfall	# Days MFL Violation	‰	Fecal Coliform Bacteria (cfu/100ml)	% days supplemental flow provided (if needed)	# people	# people	# people	# vessels	# Acres	# Acres	
Green Level	± 50% of mean	0	min ≥ 20 ‰	90% of sites ≤ 200	≥ 90%	≥ 90%						
Yellow	± 75% of mean	1	min ≥ 10 ‰	2 or more sites >200 but ≤ 400	≤ 90%	< 90%						
Red	> or < 75% of mean	≥ 2	min < 10 ‰	> 2 sites > 400	≤ 60%	< 75%						
2019	Jan	5.87	17	29.9	1	Supl Flows Delivered	105%	31,764		0	48	
	Feb	3.27	3	24.5	1	No Flow G-161	106%	29,247		0	18	
	Mar	2.51	0	30.4	0	No Flow G-161	119%	35,496		2	43	
	Apr	3.57	0	31.2	0	No Flow G-161	79%	30,351		1,945	124	
	May	5.30	0	25.7	0	No Flow G-161	113%	25,961		946	175	
	Jun	8.51	0	23.5	0	No Flow G-161	98%	22,673		177	13	
	Jul	7.14	0	28.8	0>200	Not needed	85%	21,937		77	74	
	Aug	14.28	0	15.9	3>200	Not needed	89%	16,841		0	75	
	Sept	4.59	0	12.9	0>200	Not needed	74%	23,624		59	0	
	Oct	5.01	0	26.9	0>200	Not needed	116%	23,725		23	26	
	Nov	3.15	0	18.7	1>200	Not needed	113%	29,202		663	3	
	Dec	9.10	0	6.1	1>200	Not needed	108%	30,261		776	19	
2020	Jan	1.96	0	7.3	0>200	Not needed	109%	34,799		0	14	
	Feb	2.73	0	24.5	1>200	Not needed	137%	30,435		65	25	
	Mar	0.15	23	27.9	3>200	No Flow G-161	40%	21,593		61	305	
	Apr	3.17	30	32.7	1>200	No Flow G-161	0%	22		61	745	
	May	11.18	31	11.2	2>200	10%	0%	12,923		139	919	
	Jun	11.60	1	2.0	0>200	Not needed	0%	19,703		223	0	
	Jul	9.92	0	17.3	2>200	Not needed	0%	18,430		59	435	
	Aug	9.36	0	13.0	2>400	Not needed	0%	17,510		30	188	
	Sept											
Data Source	LRD	USGS	LRD	LRD	FWMD	LRD	JDSP	PBC	PBC	JDSP	JDSP	

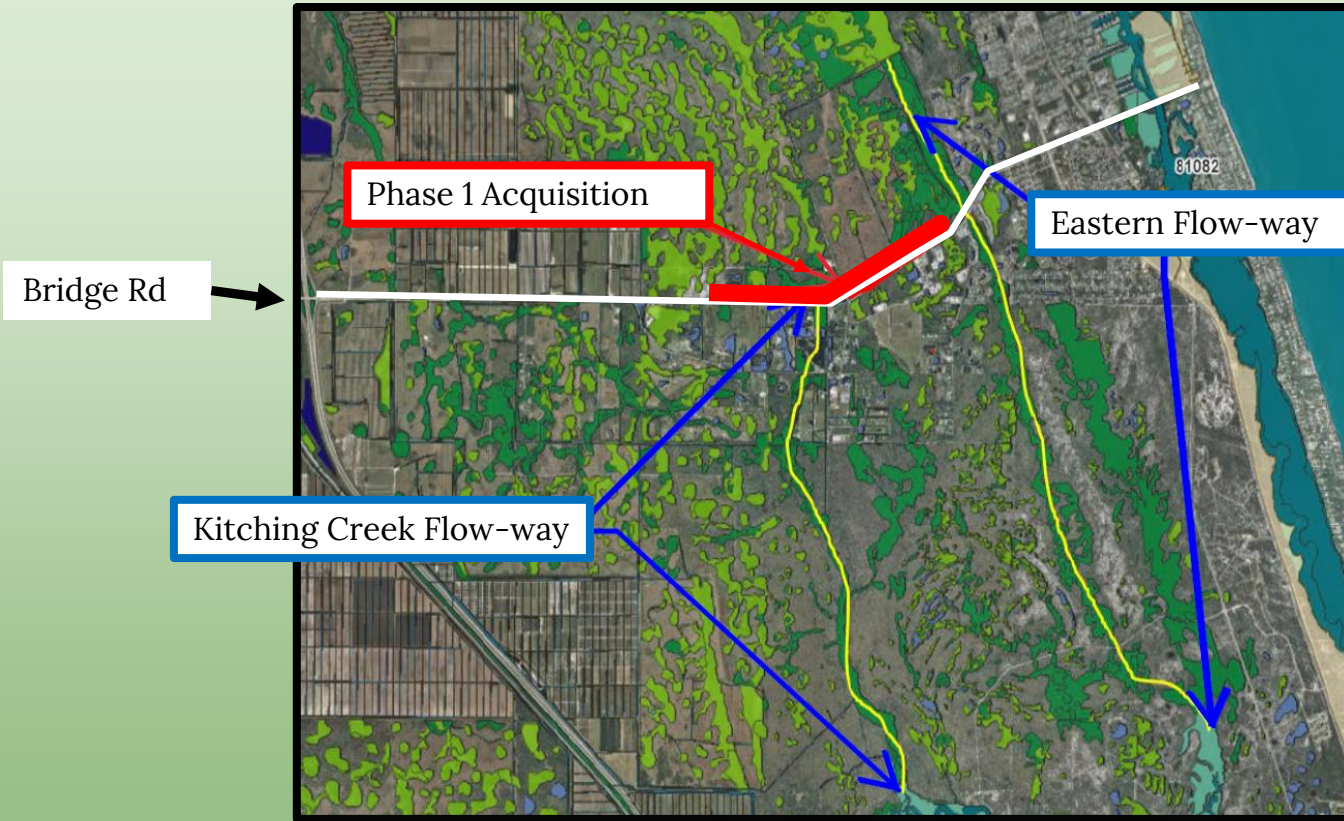
- Minimum Flows and Levels (MFLs) often not met.
- Cypress trees continue to die as the river is deprived of fresh water
- Meanwhile, Hobe Sound floods

# Loxa-Lucie Headwaters – Phase 1 Acquisition



To permanently restore historical water flows and protect existing natural lands in an ecological corridor for native endangered plants and wildlife

# Loxa-Lucie Headwaters – Phase 1 Acquisition



- The first phase involves acquisition of nearly 1/3 (2-miles) along the north side of Bridge Road
- This tract controls two critical flow-ways under Bridge Rd. to the Loxahatchee

This map from FEMA (Federal Emergency Management Agency) shows wetlands (in green) in the Loxa-Lucie Headwaters and two key flow-ways into the Loxahatchee River.

# Loxa-Lucie Headwaters - Phase 1 Acquisition

## A key parcel

- 2 mile frontage on Bridge Rd.
- 138 Acres
- For sale
- Property owner interested in sale for conservation





## Loxa-Lucie Headwaters



## Water Management

- Restore hydrology
- Manage water to reduce likelihood of regional flooding
- Increase flow to Kitching Creek & Loxahatchee River
- Prevent further degradation of water quality in the South Fork of the St. Lucie River

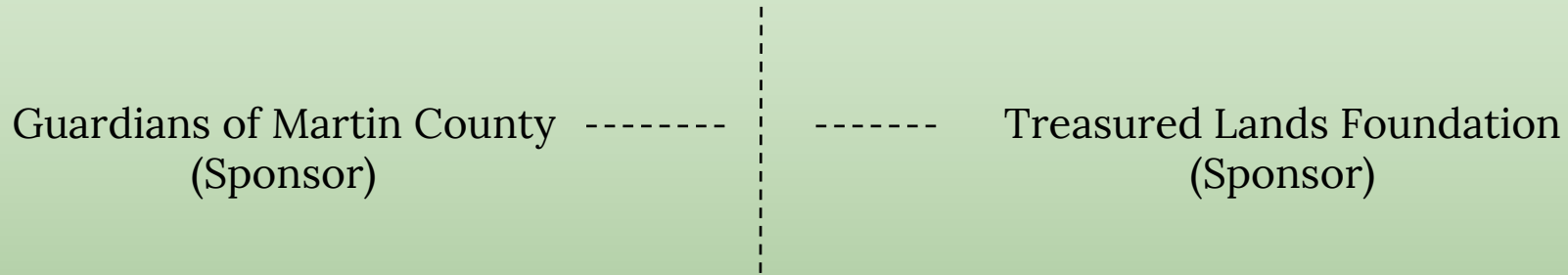
## Recreational Opportunities

- Hiking Trails
- Wildlife Viewing
- Equestrian trails, with eventual connections to Jonathan Dickinson and Atlantic Ridge State Parks

# Loxa-Lucie Headwaters

## Organizational Chart for Acquisition

The Conservation Fund



For this initiative, The Guardians of Martin County and the Treasured Lands Foundation have engaged The Conservation Fund (a nationwide land stewardship organization) to manage the Phase 1 land acquisition program.

Completion of additional acquisitions will likely require state, federal and/or county funds, for which the Loxa-Lucie team intends to pursue modifying the boundaries of Florida Forever projects and advocating for the implementation of the natural lands hydrologic restoration called for in the Comprehensive Everglades Restoration Plan.

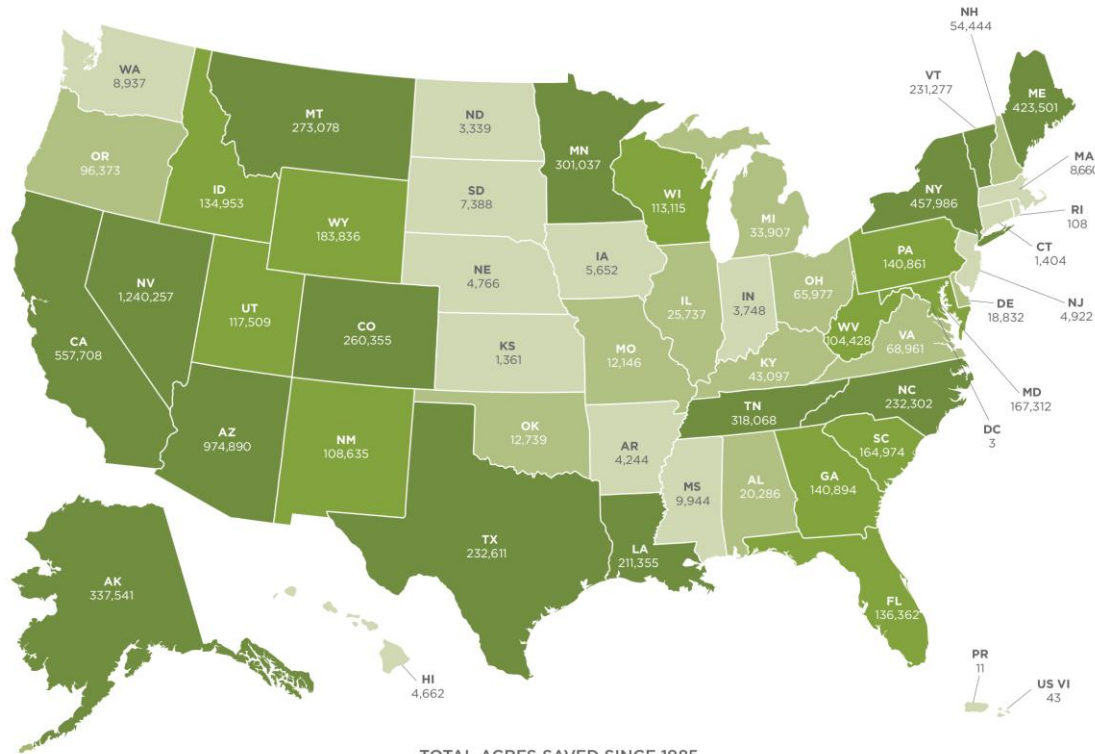
# The Conservation Fund



The professional land conservation group The Conservation Fund is providing assistance with the Loxa-Lucie Headwaters Initiative. The following two slides provide information about this organization, their nationwide and state-wide experience and their role in the project.

# The Conservation Fund – Where we Work

Over 8 Million Acres Protected Since 1985



TOTAL ACRES SAVED SINCE 1985

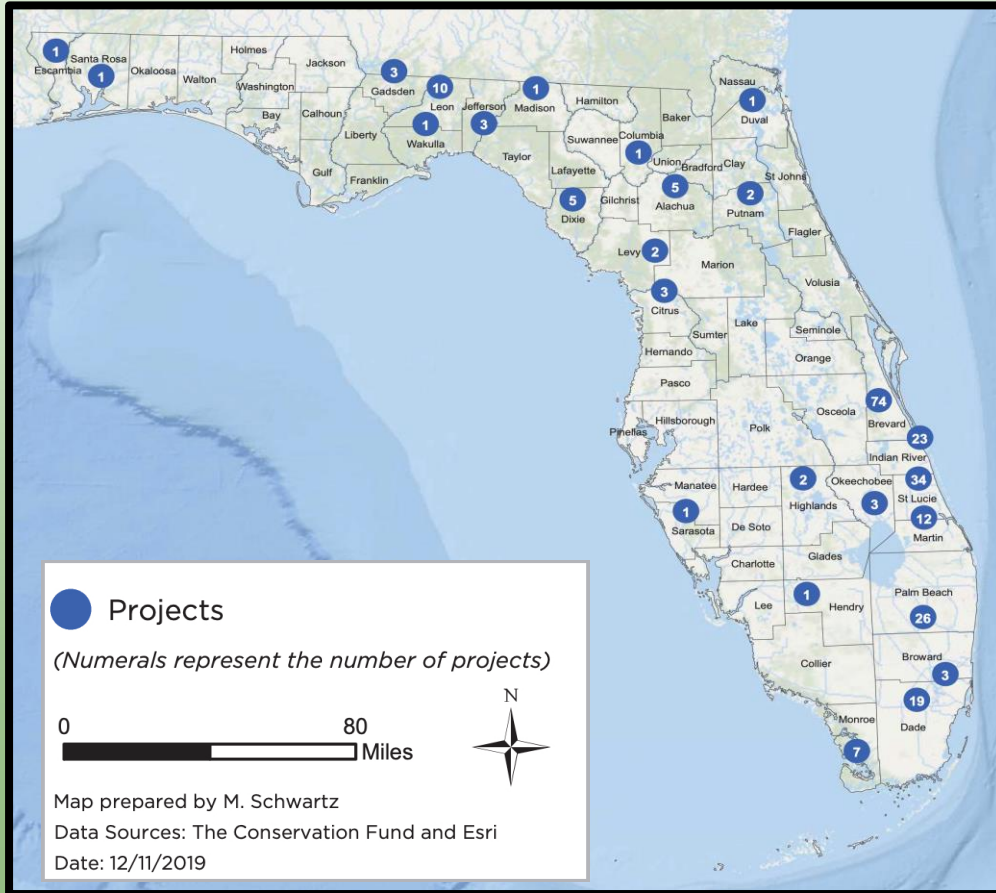
0-9,999

10,000-99,999

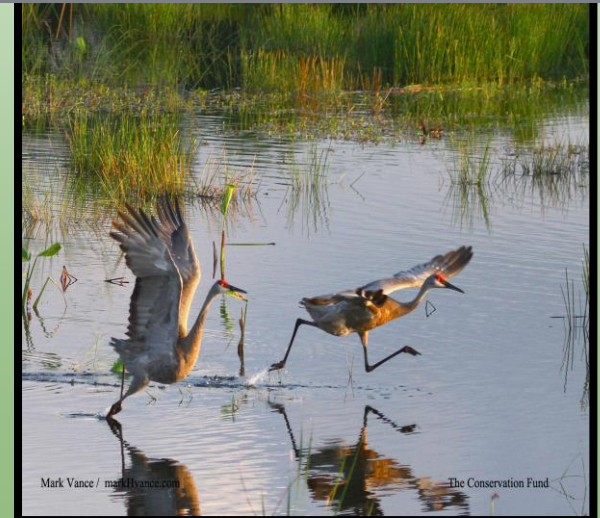
100,000-199,999

200,000+

# The Conservation Fund - Florida Projects (1985-2019)



Number of Projects: 244  
Acres Protected: 136,433  
Fair Market Value: \$665,901,391  
Acquisition Cost: \$529,975,978



# Loxa-Lucie Headwaters

## Projected Time Line

### Schedule

- ✓ Nov 2019      Approved by Guardians Board of Directors
- ✓ Nov 2019      Approved by Treasured Lands Foundation Board of Directors
- ✓ Dec 2019      Launch Campaign
- ✓ April 2020    Initiate fund raising for Phase 1 acquisition (\$250,000)
- ✓ Spring 2020   Begin outreach to governmental & NGO entities
- Fall 2020 - May 2021    Complete fund raising for Phase 1 acquisition costs  
(~ \$2-2.5M)

# Loxa-Lucie Headwaters

The Conservation Fund is serving as the fundraising vehicle for the Loxa-Lucie Initiative. At this time of uncertainty, we realize that we all have other things on our minds, and we wish you and your families all the best. Please be safe and healthy. We will resume our face-to-face educational and fundraising efforts for this project once this crisis has passed. In the meantime, if you would like to learn more about this initiative, please email Matt Sexton, Greg Braun, or Chuck Barrowclough to discuss by email or by telephone.

[msexton@conservationfund.org](mailto:msexton@conservationfund.org)

Donations and applicable tax deductibility

[dgregbraun@aol.com](mailto:dgregbraun@aol.com)

Ecological issues

[cbarrowclough@treasuredlands.org](mailto:cbarrowclough@treasuredlands.org)

Property management, recreation,  
hydrologic reconnection opportunities

# Loxa-Lucie Headwaters

## ***Pledging A Gift To The Conservation Fund***

"[I / We] hereby pledge the total sum of \$ \_\_\_\_\_ as a charitable contribution to The Conservation Fund, to be a restricted gift toward the Loxa-Lucie project. This pledge is payable \_\_\_\_\_ (date) in \_\_\_\_\_ Installment(s).

Signature \_\_\_\_\_

## ***Making A Gift To The Conservation Fund***

On behalf of The Conservation Fund, thank you for your support of the Loxa-Lucie project. Your restricted gift will directly support the project acquisition costs associated with the purchase of the Loxa-Lucie project in Hobe Sound, FL.

## ***Acknowledgements & Recognition***

We formally acknowledge all contributions to The Conservation Fund by letter. Unless directed by the donor to remain anonymous, all gifts of \$1,000 and more are recognized in The Conservation Fund's annual report. Thank you for your thoughtful commitment.

**Contact Name and E-mail Address** \_\_\_\_\_

**Address: City, State, Zip** \_\_\_\_\_

## **Donation via Check**

Checks should be made payable to **The Conservation Fund**. Please designate your gift by including Worldwide Fabrics/Bridge Rd, FL #26995 on the reference line and mail to The Conservation Fund's headquarters: 1655 N. Fort Myer Drive, Suite 1300, Arlington, VA 22209

## **Donation via online**

[www.conservationfund.org/donate](http://www.conservationfund.org/donate)

## **Donation via Wire**

WIRE TO: SunTrust Bank; 7818 Parham Road, Richmond, VA 23294. CREDIT TO: The Conservation Fund; ACCOUNT NO: 202132617; ABA NO: 061000104. WIRE ADVICE TO: Please reference The Conservation Fund's Worldwide Fabrics/Bridge Road, FL project **#26995**. BANK CONTACT: Deniece Garrett (202) 879-6281

# Loxa-Lucie Headwaters

