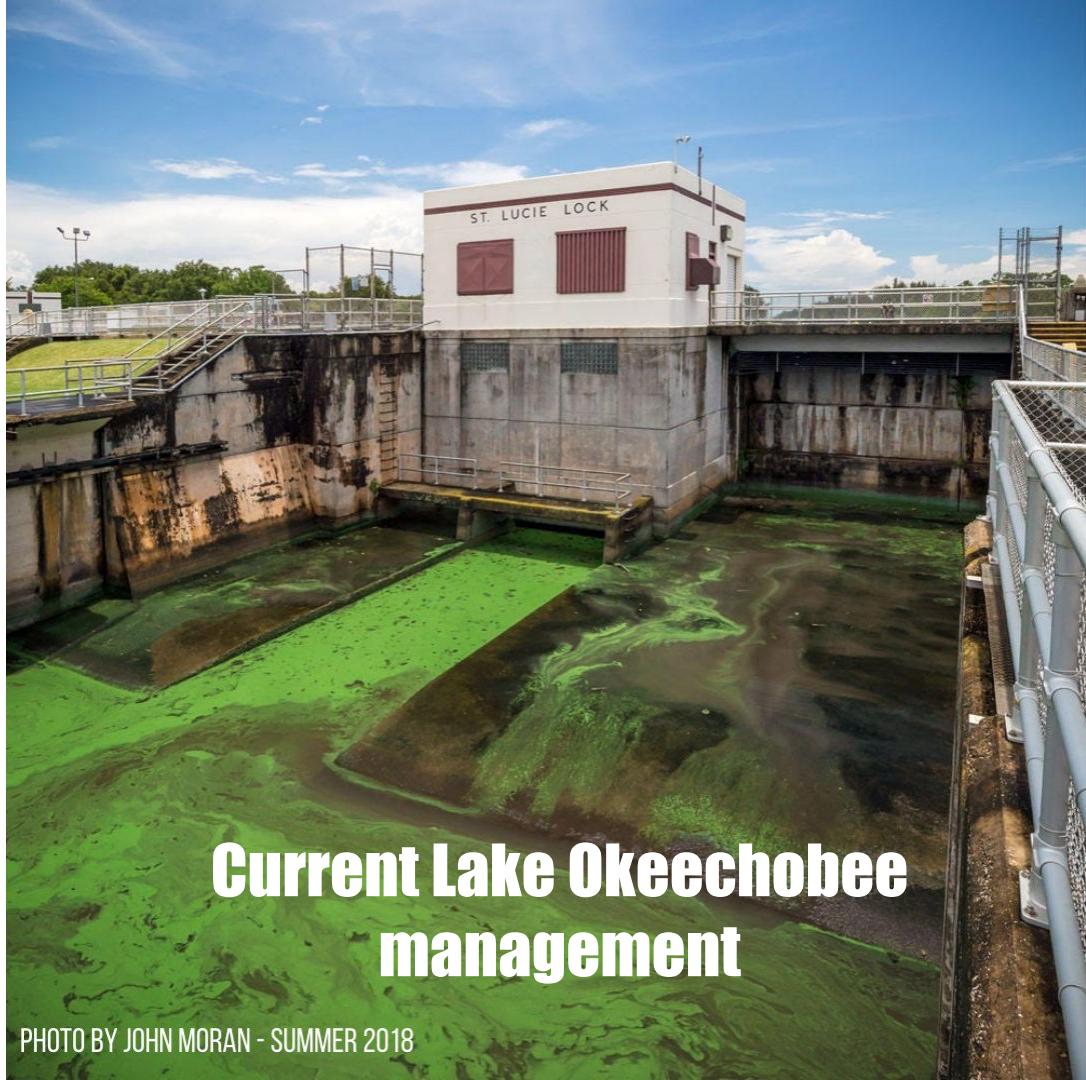


**What You Can Do to
End the Discharges:**

**The Imperative of
Speaking with One Voice**





Current Lake Okeechobee management

PHOTO BY JOHN MORAN - SUMMER 2018



Stuart

BLUE-GREEN ALGAE
AVOID CONTACT WITH THE WATER

FOR MORE INFORMATION CONTACT
FLORIDA DEPARTMENT OF HEALTH IN MARTIN COUNTY
(772)221-4000

LAKE OKEECHOBEE SYSTEM OPERATING MANUAL (LOSOM)

PDT

Deep Dive of Top 3 Plans and Selection of
Iteration 1 Alternatives

25 January 2021

U.S. Army Corps of Engineers
Jacksonville District



US Army Corps
of Engineers®





BOTTOM LINE UP FRONT

REPRESENTATIVE PLANS FOR ITERATION 1 ARRAY



| Plan # | Description | Recommended Plan |
|--------|--|---|
| 1A | Manage risk to public health and safety- Dam safety focused | NONE - constraint |
| 1B | Manage risk to public health and safety- Algal Bloom Risk in Lake Okeechobee | NONE – focus on operations limiting releases to estuaries |
| 1C | Manage risk to public health and safety – Algal Bloom Risk in Estuaries | 1C-1_8086 (6329) |
| 2A | Maintain congressionally authorized project purposes of navigation | 4BC-1_7802 (15617) |
| 2B | Maintain congressionally authorized project purposes of recreation | 4C-2_9275 (25158) |
| 2C | Maintain congressionally authorized project purposes of flood control | NONE |
| 3 | Improve water supply performance | 4BC-1_5423 (15122) |
| 4A | Enhance ecology in Lake Okeechobee | LORS08flex_2827 (601) |
| 4B | Enhance ecology in Caloosahatchee Estuary | 2C_2193 (7023) |
| 4C | Enhance ecology in St. Lucie Estuary | 4C-1_3307 (22448) |
| 4D | Enhance ecology in South Florida | 4BC-2_6132 (18729) |

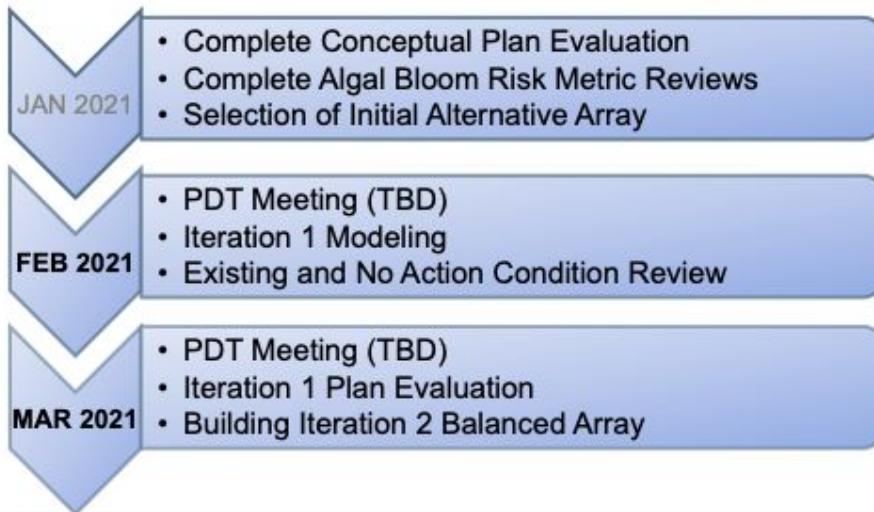


LOSOM SCHEDULE



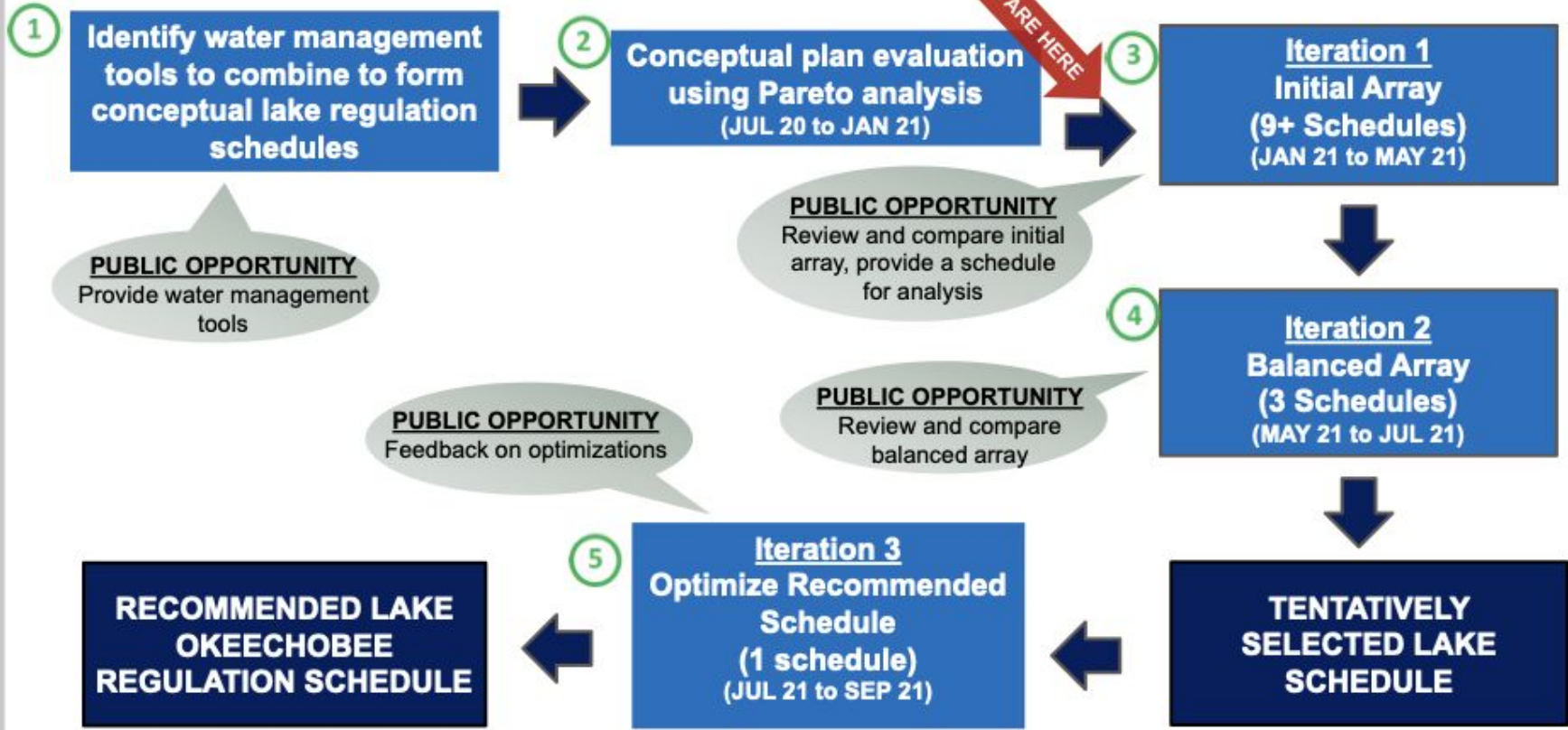
90 DAY LOOK AHEAD

| MILESTONE | DATE |
|---|----------------------------|
| Scoping Meetings (complete) | February - March 2019 |
| Plan Formulation & Performance Evaluation Finalized | June 2020 |
| Evaluation of Alternative Lake Schedules | July 2020 – September 2021 |
| Draft NEPA Document Release | January 2022 |
| Final NEPA Document Release | July 2022 |
| Record of Decision (ROD) | October 2022 |





LOSOM ALTERNATIVE EVALUATION SCHEDULE





ZERO DISCHARGES

ZERO DISCHARGES

ZERO DISCHARGES

ZERO DISCHARGES

ZERO DISCHARGES

ZERO DISCHARGES

ZERO DISCHARGES

ZERO DISCHARGES

ZERO DISCHARGES

ZERO DISCHARGES

ZERO DISCHARGES

ZERO DISCHARGES

ZERO DISCHARGES

ZERO DISCHARGES

HUMAN HEALTH & SAFETY

HUMAN HEALTH & SAFETY

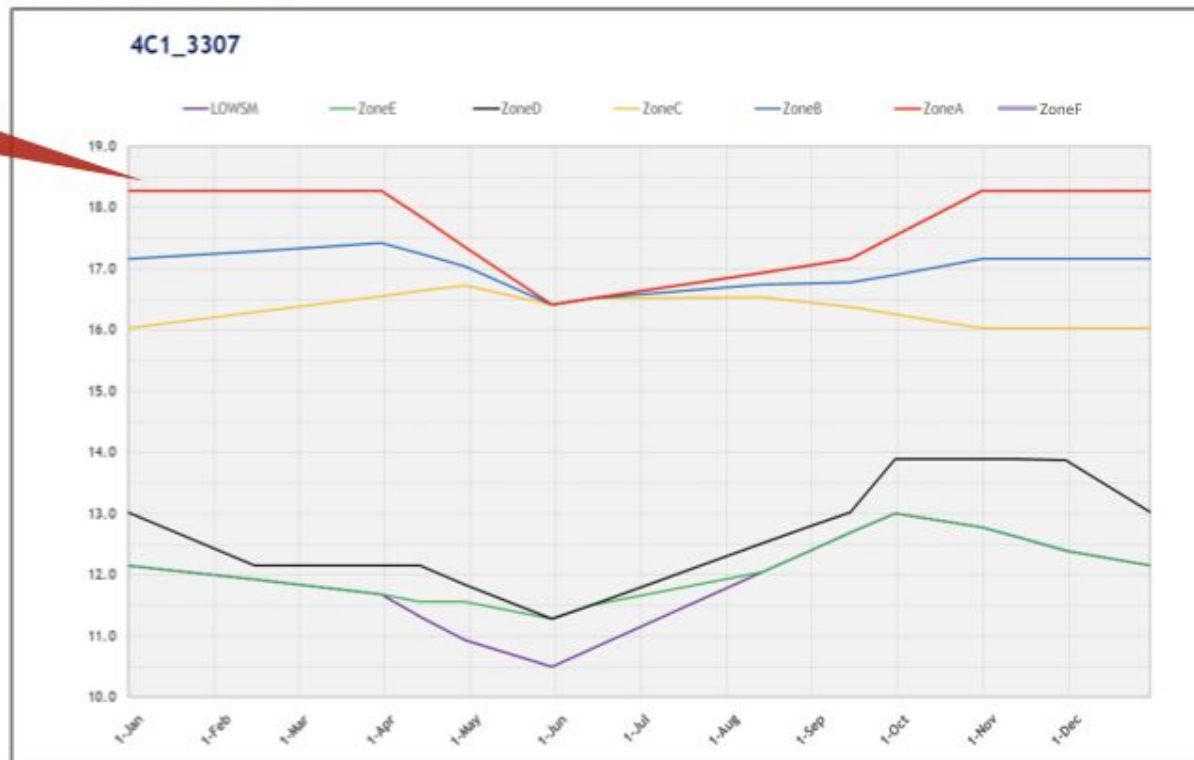
ZERO DISCHARGES



REPRESENTATIVE PLAN FOR SUB-OBJECTIVE 4C ST. LUCIE ECOLOGY PLAN: 4C-1_3307 (22448)



Zone A > 18 feet



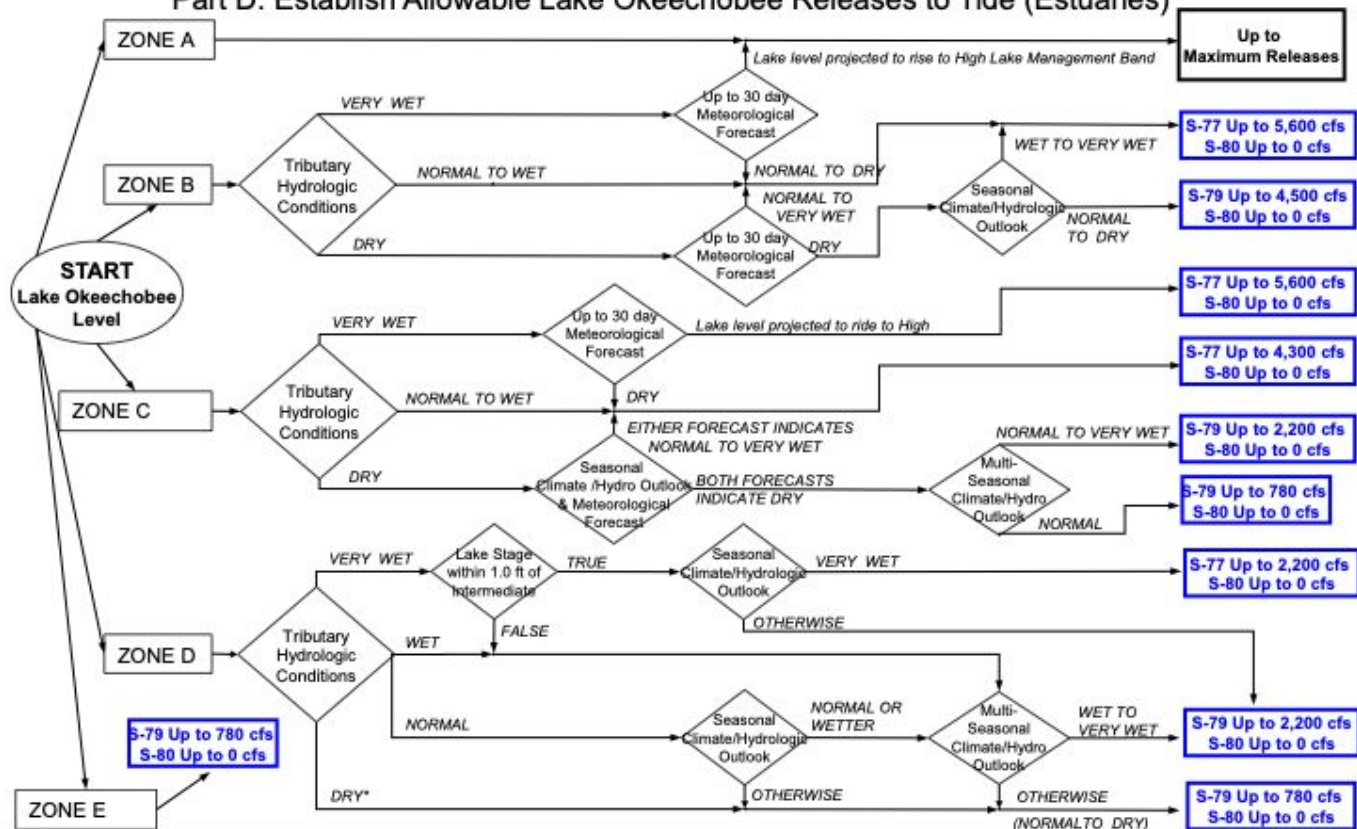


OBJECTIVE 4C ST. LUCIE ECOLOGY



"4C1_3307" –St. Lucie releases are switched off except for Zone A

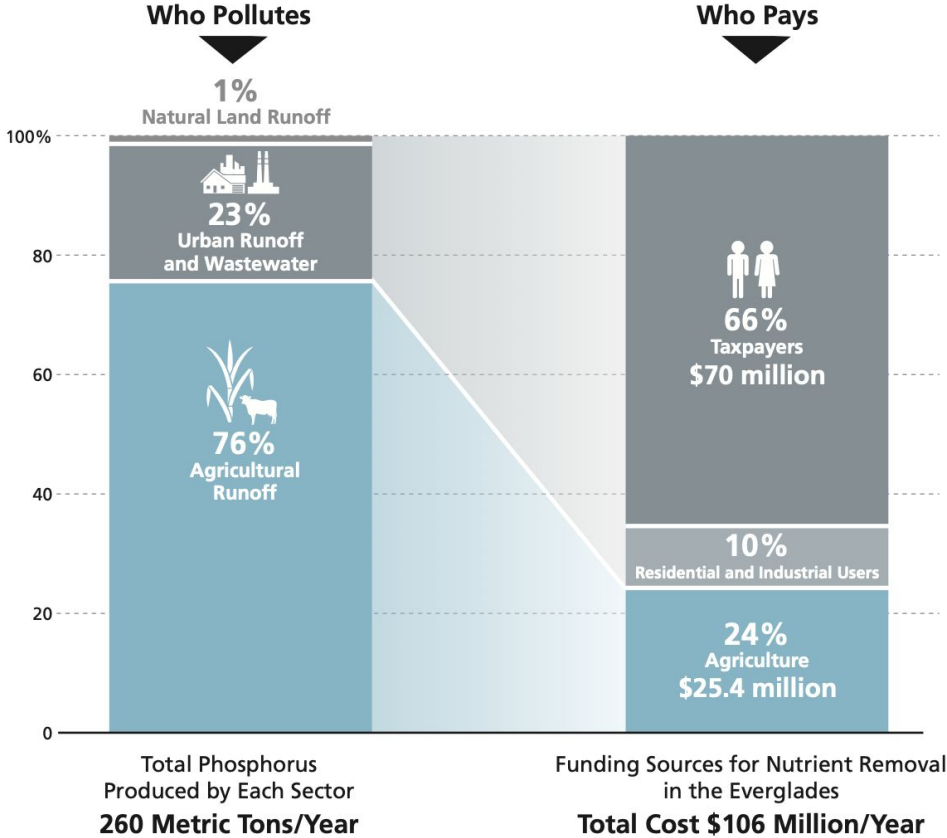
Part D: Establish Allowable Lake Okeechobee Releases to Tide (Estuaries)



| Water | Total Lake Releases to STAs | Wet Season Lake Inflow | Dry Season Lake Inflow | Other STA Inflows | Total to STA | Lake as % to STA |
|--------------|------------------------------------|-------------------------------|-------------------------------|--------------------------|---------------------|-------------------------|
| Year | Flow, AF | Flow, AF | Flow, AF | Flow, AF | Flow, AF | % |
| 1995 | 39,848 | 12,904 | 26,944 | 52,516 | 92,364 | 43% |
| 1996 | 114,800 | 19,364 | 95,436 | 67,870 | 182,670 | 63% |
| 1997 | 49,882 | 22,114 | 27,767 | 68,899 | 118,780 | 42% |
| 1998 | 26,372 | 7,638 | 18,735 | 77,195 | 103,568 | 25% |
| 1999 | 63,316 | 18,288 | 45,027 | 65,336 | 128,652 | 49% |
| 2000 | 53,292 | 8,641 | 44,651 | 142,421 | 195,713 | 27% |
| 2001 | 18,201 | 5,717 | 12,483 | 188,339 | 206,540 | 9% |
| 2002 | 3,912 | 217 | 3,695 | 702,640 | 706,552 | 1% |
| 2003 | 343,385 | 156,970 | 186,414 | 751,269 | 1,094,653 | 31% |
| 2004 | 25,347 | 259 | 25,087 | 757,960 | 783,307 | 3% |
| 2005 | 152,133 | 13,777 | 138,356 | 1,350,695 | 1,502,828 | 10% |
| 2006 | 69,824 | 5,410 | 64,415 | 1,387,778 | 1,457,603 | 5% |
| 2007 | 25,979 | 5,579 | 20,400 | 903,243 | 929,222 | 3% |
| 2008 | 1,010 | 281 | 728 | 778,978 | 779,987 | 0% |
| 2009 | 32,336 | 1,740 | 30,596 | 1,124,897 | 1,157,233 | 3% |
| 2010 | 4,497 | 1,886 | 2,611 | 1,453,375 | 1,457,872 | 0% |
| 2011 | 30,699 | 13,754 | 16,945 | 704,960 | 735,659 | 4% |

| Water | Total Lake Releases to STAs | Wet Season Lake Inflow | Dry Season Lake Inflow | Other STA Inflows | Total to STA | Lake as % to STA |
|---------------------------------|------------------------------------|-------------------------------|-------------------------------|--------------------------|-------------------------|-------------------------|
| Year | Flow, AF | Flow, AF | Flow, AF | Flow, AF | Flow, AF | % |
| 2012 | 51,643 | 2,157 | 49,486 | 662,621 | 714,264 | 7% |
| 2013 | 80,823 | 1,507 | 79,316 | 1,087,419 | 1,168,242 | 7% |
| 2014 | 170,445 | 69,256 | 101,190 | 1,125,238 | 1,295,683 | 13% |
| 2015 | 580,189 | 185,245 | 394,945 | 800,288 | 1,380,478 | 42% |
| 2016 | 270,453 | 143,646 | 126,807 | 1,063,312 | 1,333,765 | 20% |
| 2017 | 275,882 | 77,766 | 198,117 | 833,985 | 1,109,868 | 25% |
| 2018 | 147,246 | 3,604 | 143,642 | 1,492,192 | 1,639,438 | 9% |
| 2019 | 467,310 | 302,916 | 164,394 | 1,090,767 | 1,558,077 | 30% |
| <i>Average 2009-2019</i> | <i>191,957</i> | <i>73,043</i> | <i>118,914</i> | <i>1,039,914</i> | <i>1,231,871</i> | <i>16%</i> |
| 2020 | 249,000 | | | 750,000 | 999,000 | 25% |
| Average 2009-2020 | 196,711 | | | 1,015,755 | 1,212,465 | 16% |
| Partial 2021 (May-Nov) | 95,000 | | | 1,344,200 | 1,439,200 | 7% |


Phosphorus Pollution in the Everglades: Who Pollutes and Who Pays



JAN 28 2021

Mast Calls On Army Corps To Seize Once-In-A-Decade Opportunity To Stop Discharges To St. Lucie

WASHINGTON, D.C. – U.S. Congressman Brian Mast (FL-18) is urging Colonel Andrew Kelly of the Army Corps of Engineers to eliminate regulatory discharges from Lake Okeechobee to the St. Lucie estuary as part of the Lake Okeechobee System Operating Manual (LOSOM). The modeling presented by the U.S. Army Corps of Engineers and South Florida Water Management District over the last several months proves definitively that it is possible to eliminate discharges in the operational band while also benefiting performance for water supply and the other Congressionally-authorized project purposes. The Army Corps is expected to tentatively choose the discharge schedule that will be used for the next decade by July 2021.



“I think it would be unconscionable if the Army Corps selected a final plan that does not eliminate regulatory discharges to the St. Lucie given that the Army Corps’ own modeling proves it is not only possible but actually beneficial to other Congressionally-authorized project purposes,” **Rep. Mast wrote in the letter.** “We have a once-in-a-decade opportunity to solve a debilitating public health crisis. The Army Corps must not settle for incremental progress but rather should take the bold action needed to protect Floridians and stop government-sanctioned poisoning.”

